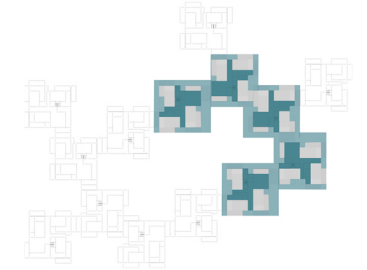


Courtyard

Residential modules are arranged in different orientations in order to create a courtyard cloister as meeting space for students. At the street floor the more public spaces such as laundry, cooking and living spaces are located. The terraces encourage cross views from the first and second floors which are oriented towards this central courtyard that serves as the heart of all residential complex.

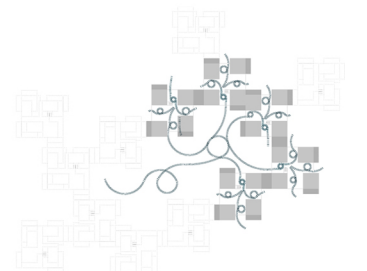
Neighbourhood and In-between Spaces

Each unit of the residence is repeated in 3 different levels creating spaces and specific volumetry which helps to build the concept of neighbourhood. Each block or group of 20 dwellings is repeated 5 times consolidating the image of the 100 dwellings. The idea is that each unit should show that each dwelling is an individual on the group.



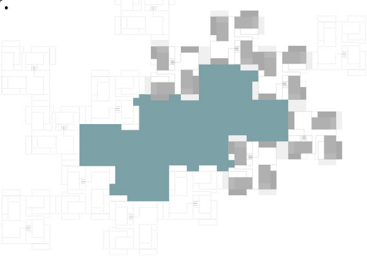
Circulation

In each block, at the street level, the common space works both as a meeting place and as a distribution area towards upper levels and other group of dwellings. Also at this level the volumetry creates different views in different directions. Three independent units will work as the area of Kitchen and Laundry.



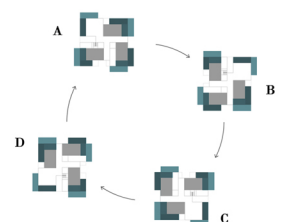
Courtyard reunion

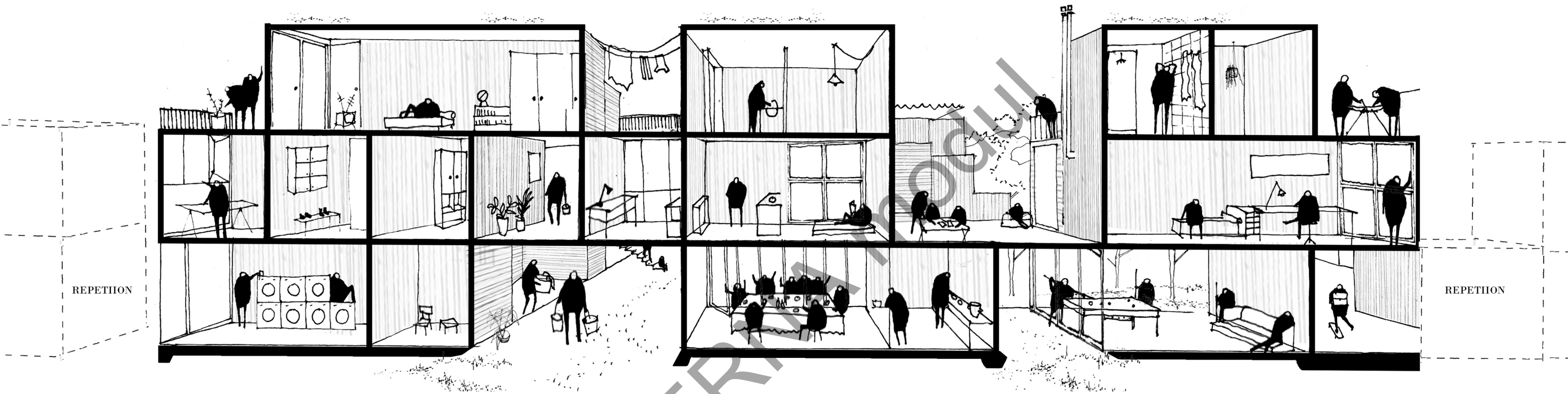
The proposal development depends on the idea of a courtyard. The objective is to create a space of meeting, where students can meet each other, can have open area activities helping to create a Community.



Flexibility orientation

Each group of 20 dwellings can have different orientation creating a flexible image of the group depending on the needs of natural light or the amount of students.





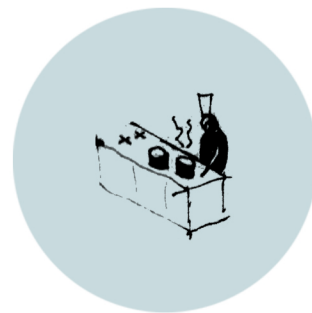
study



rest



eating



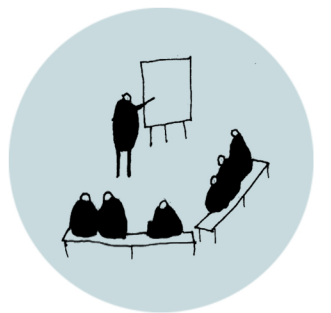
cooking



meeting



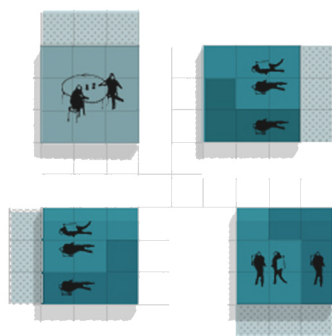
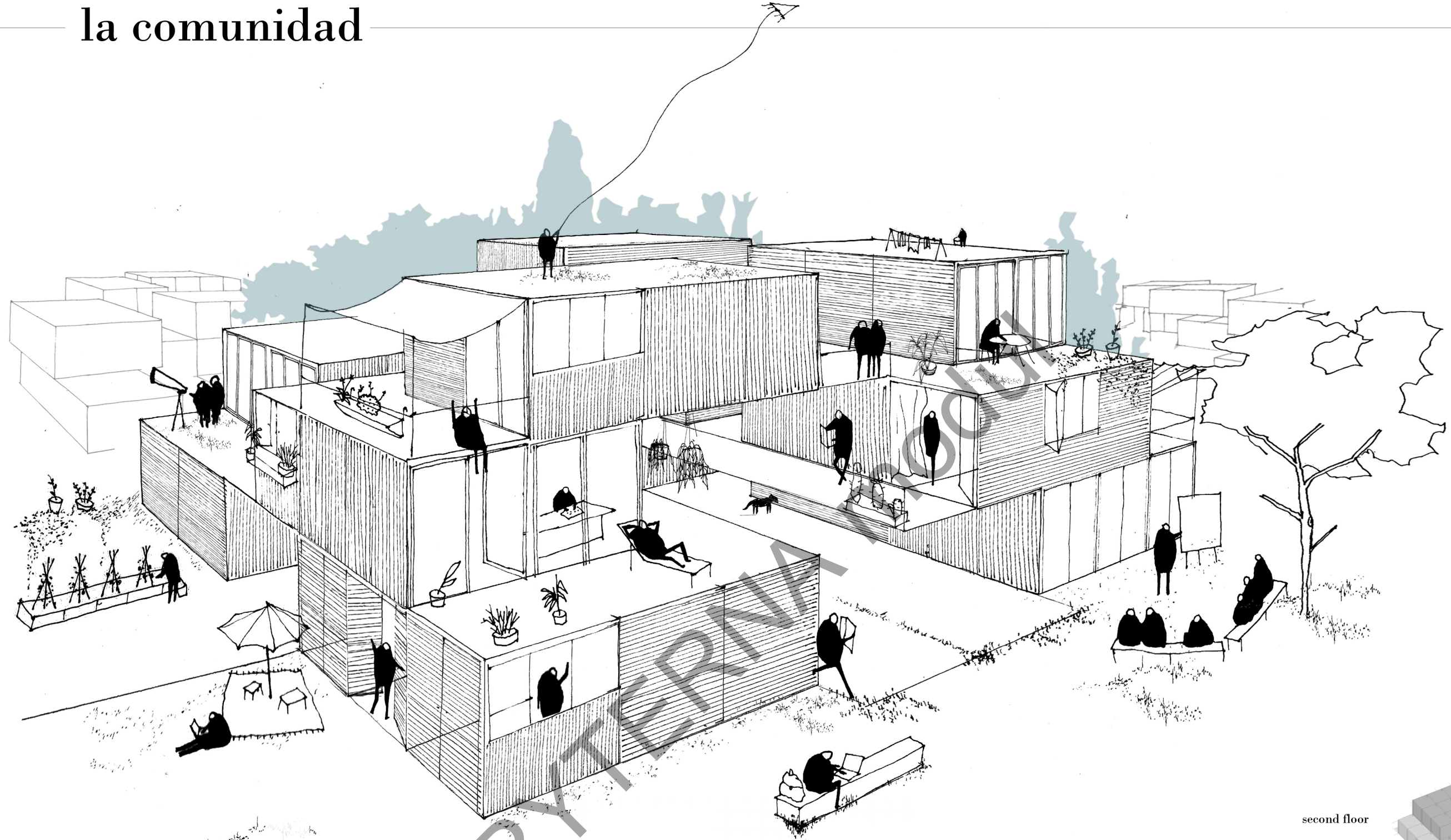
play



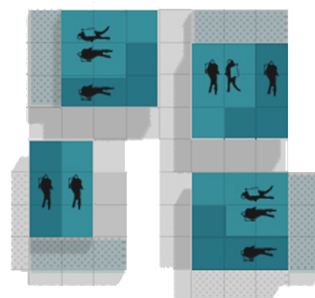
share

PUBLIC SPACE - PRIVATE SPACE

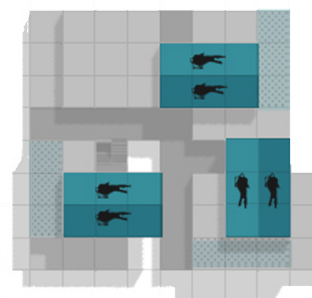
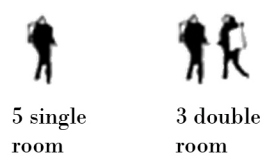
The interior common areas on each floor unify the different residential modules, function as both entrance area and circulation spaces as well as relationship and activities between different students. They are preliminary and introductory student living public spaces.



street floor



first floor



second floor

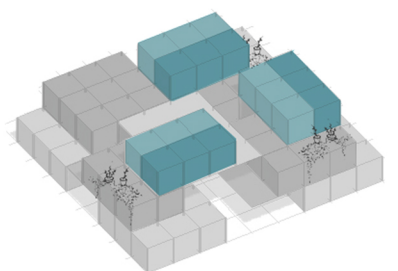


100 student housing modules are distributed for 5 blocks. Each of these are formed by 20 residential units on 3 floors.

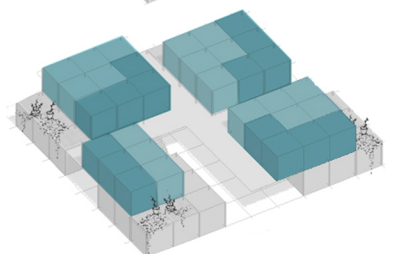
Spatial relations between the blocks are set through terraces that are achieved because the different orientations of each module in each floor.

The intention is that the terraces serve each of the modules as private outdoor space as well as space in which views are set to cross the courtyard.

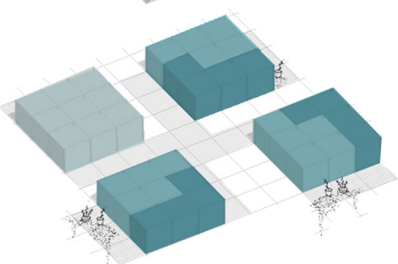
second floor

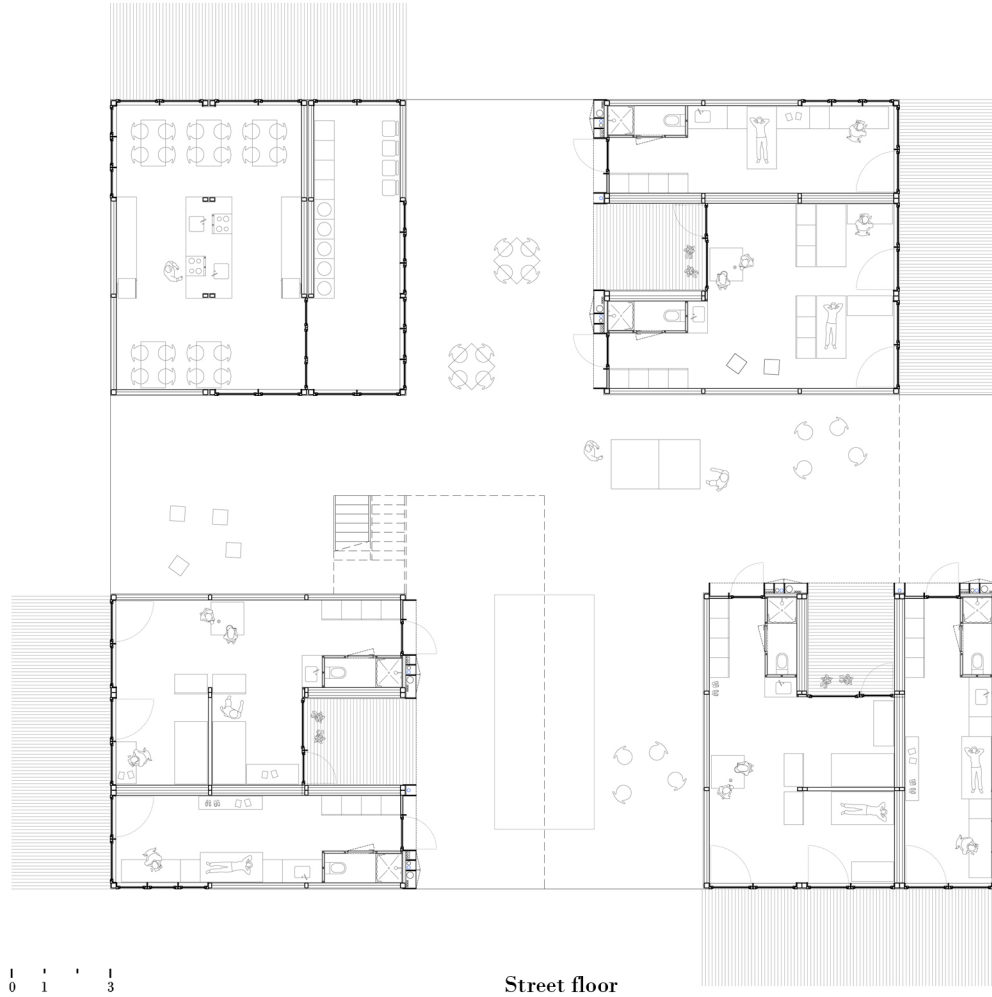


first floor

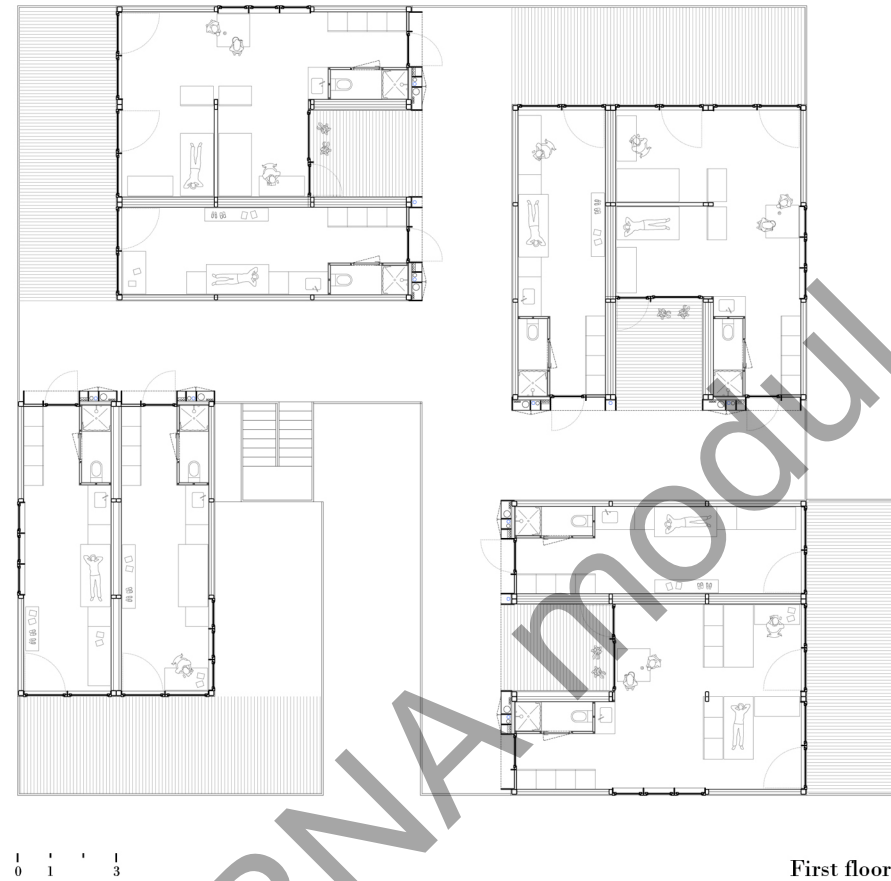


street floor

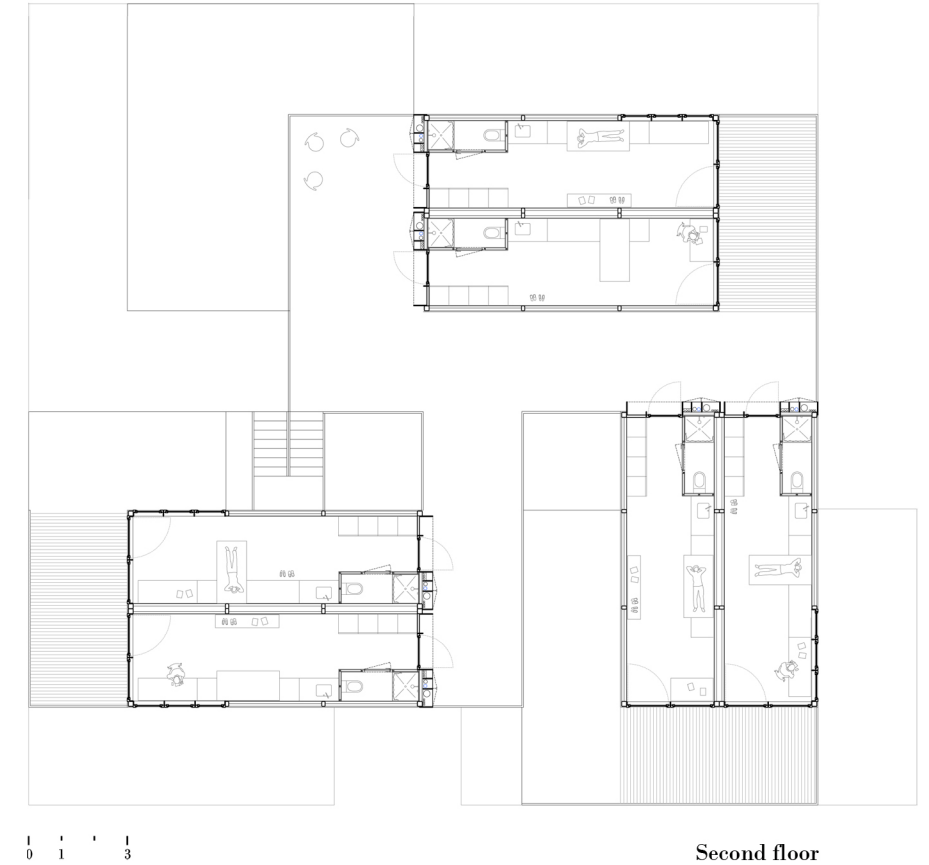




Street floor

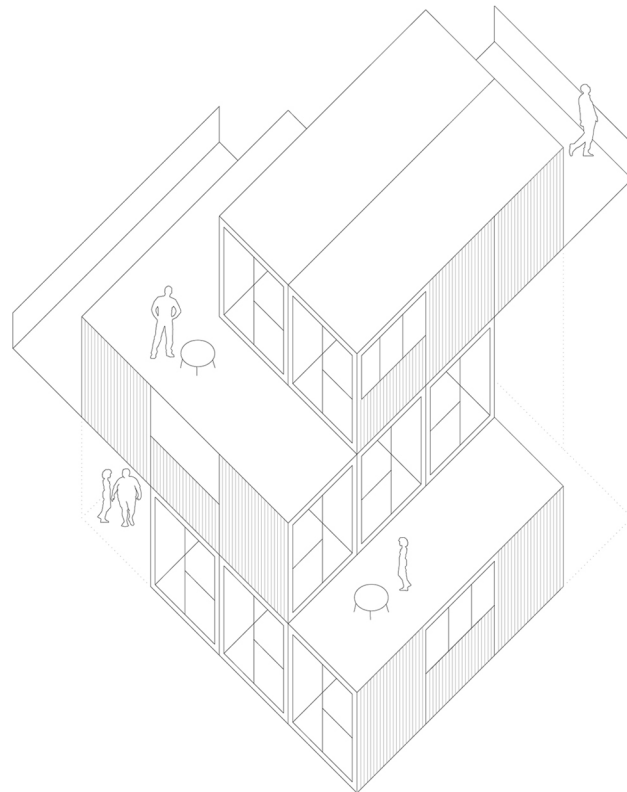


First floor



Second floor

GLOBAL VIEW

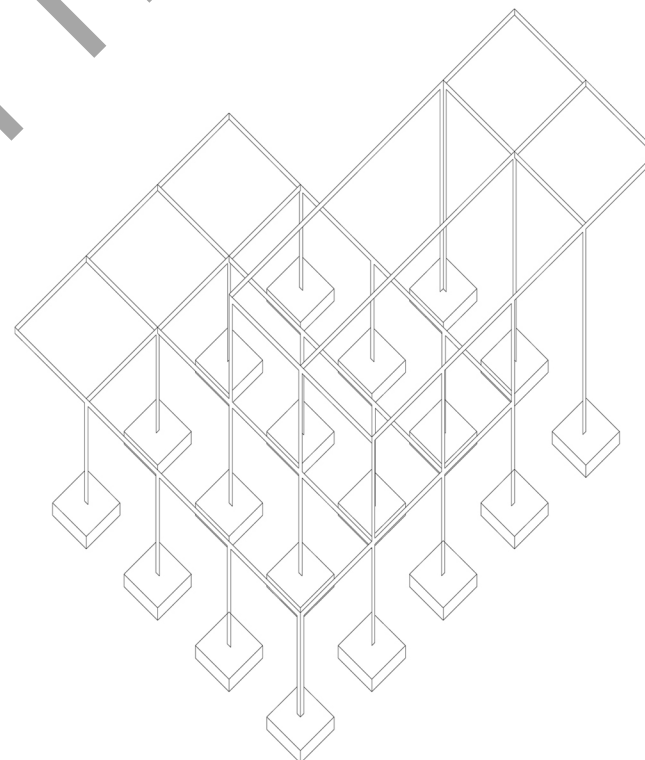


LIVING

LIVING

MEETING

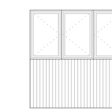
STRUCTURE



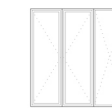
FAÇADES OPACITY



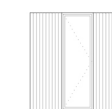
A



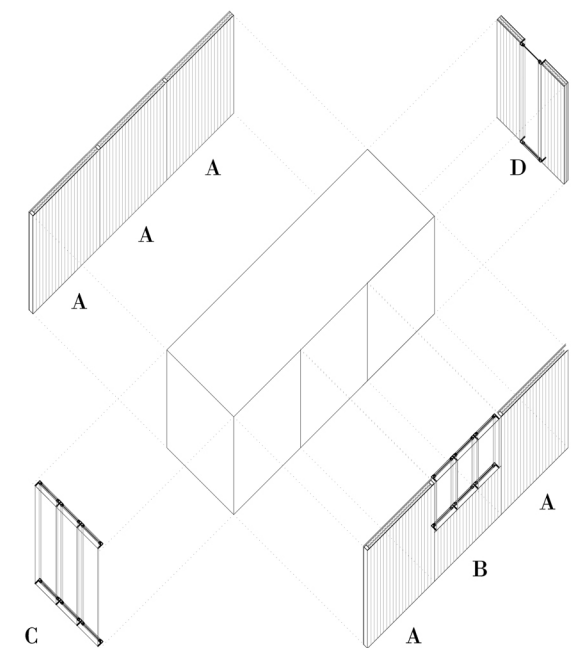
B

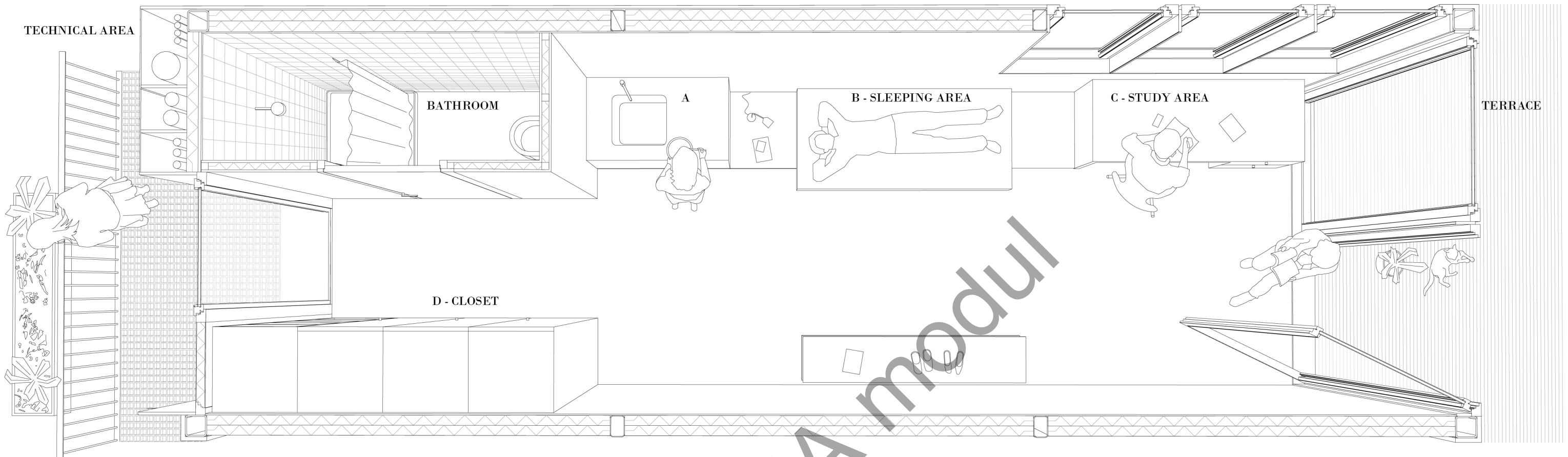


C

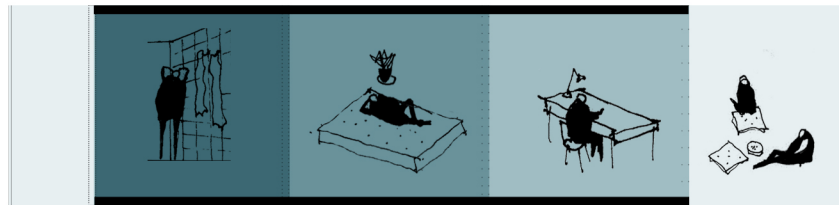


D





LIVING DIAGRAM CONCEPT



PUBLIC

SHOWER

REST

WORK

PRIVATE

MODUL AREA

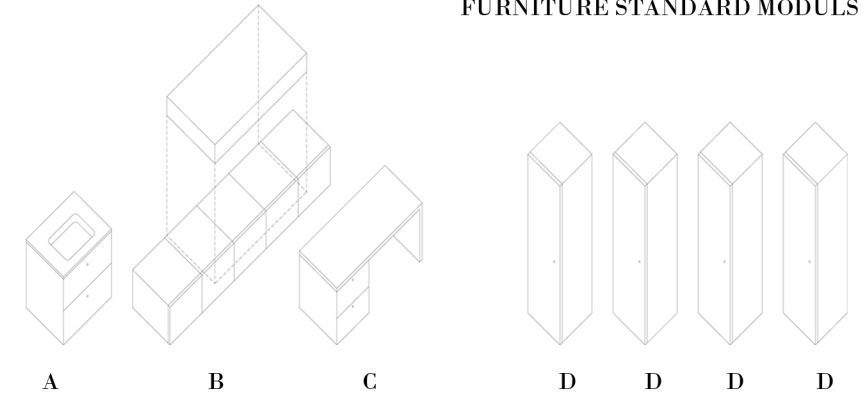
Living space 20,80 m² / Bathroom 2,08 m²

FAÇADE PANEL OPTIONS

A - Fir wood panel wih water proof finishing with thick mineral wool insulation panel.
Interior with thick wooden panel.

B - Cellular polycarbonate sheet colourless finish with cork insulation.
Interior with thick wooden panel.

FURNITURE STANDARD MODULS



A

B

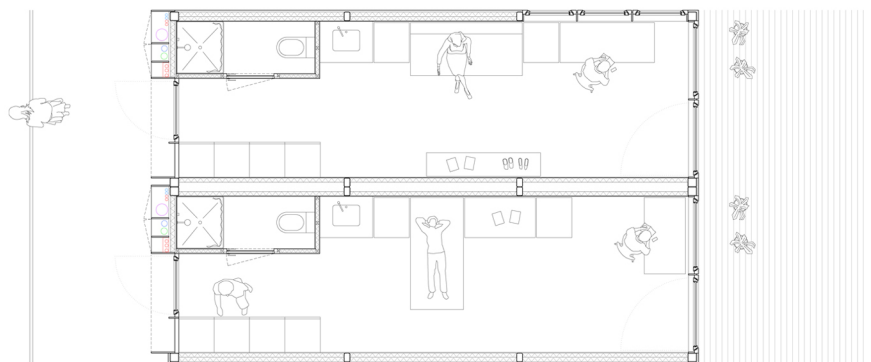
C

D

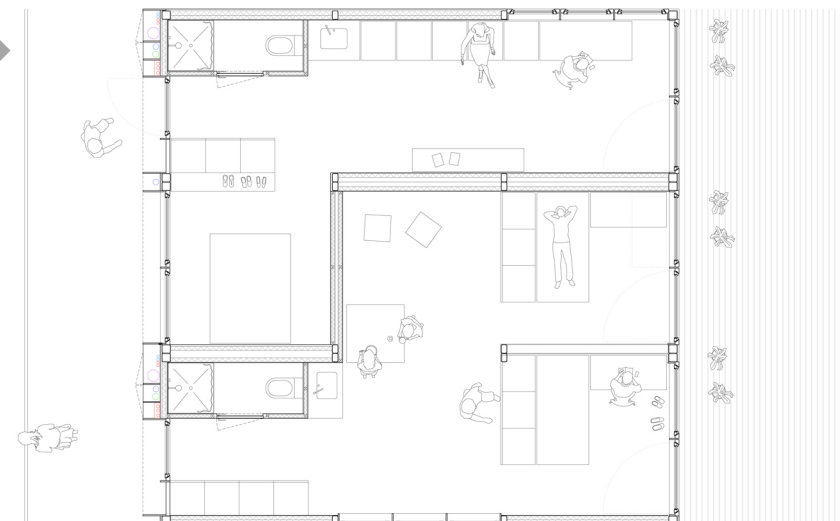
D

D

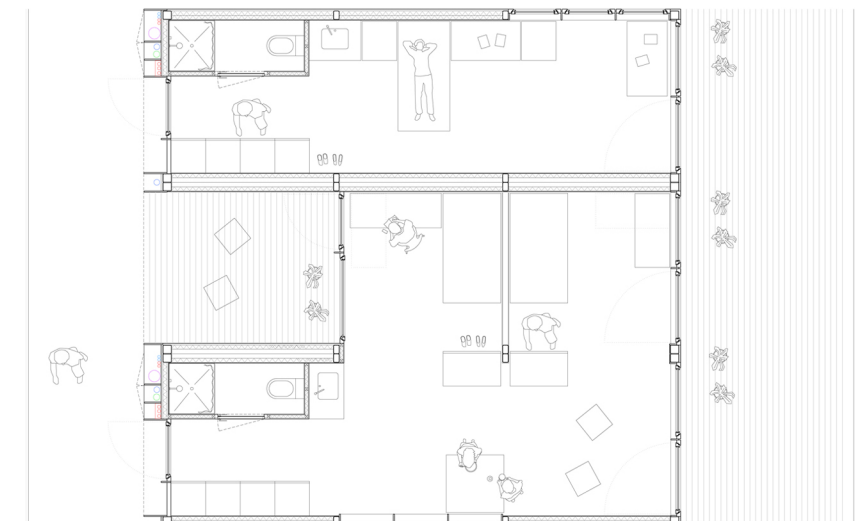
D



INDIVIDUAL ROOM MODUL GROUP



DOUBLE ROOM MODUL GROUP



INDIVIDUAL AND DOUBLE ROOM MODUL GROUP

0 0.5 1

0 0.5 1

0 0.5 1