

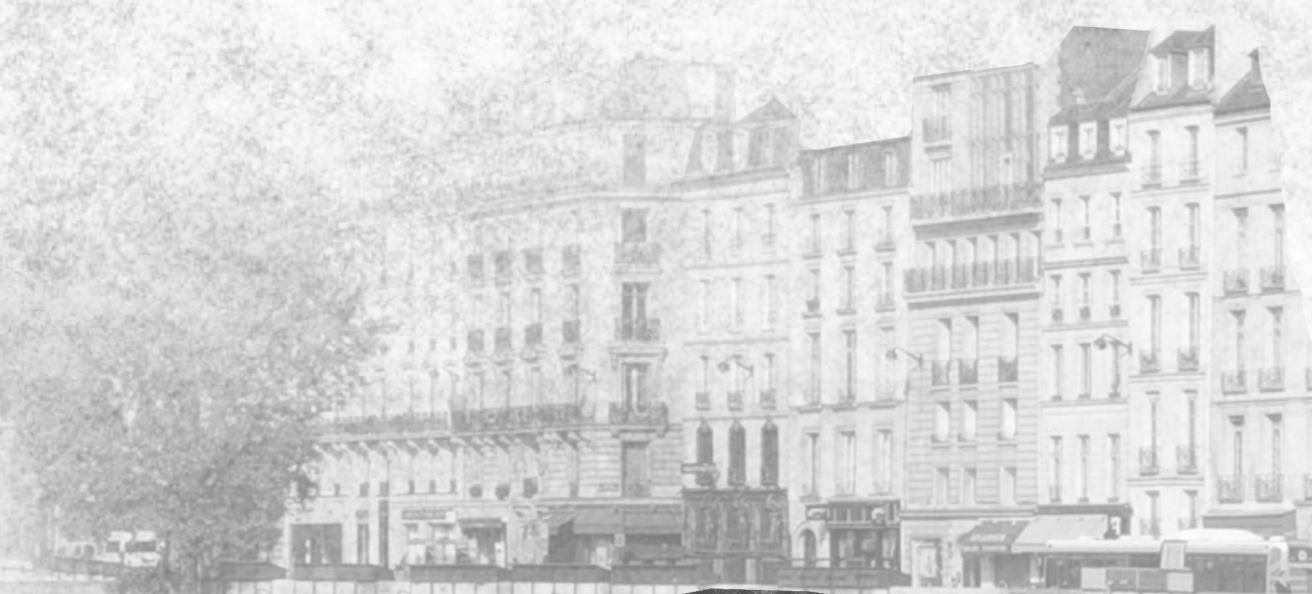
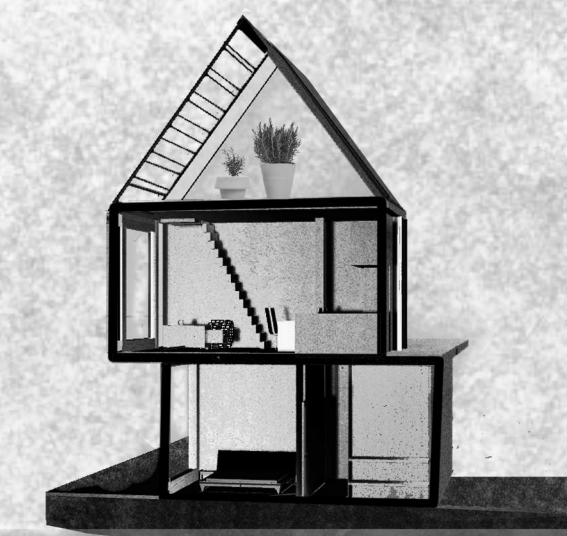
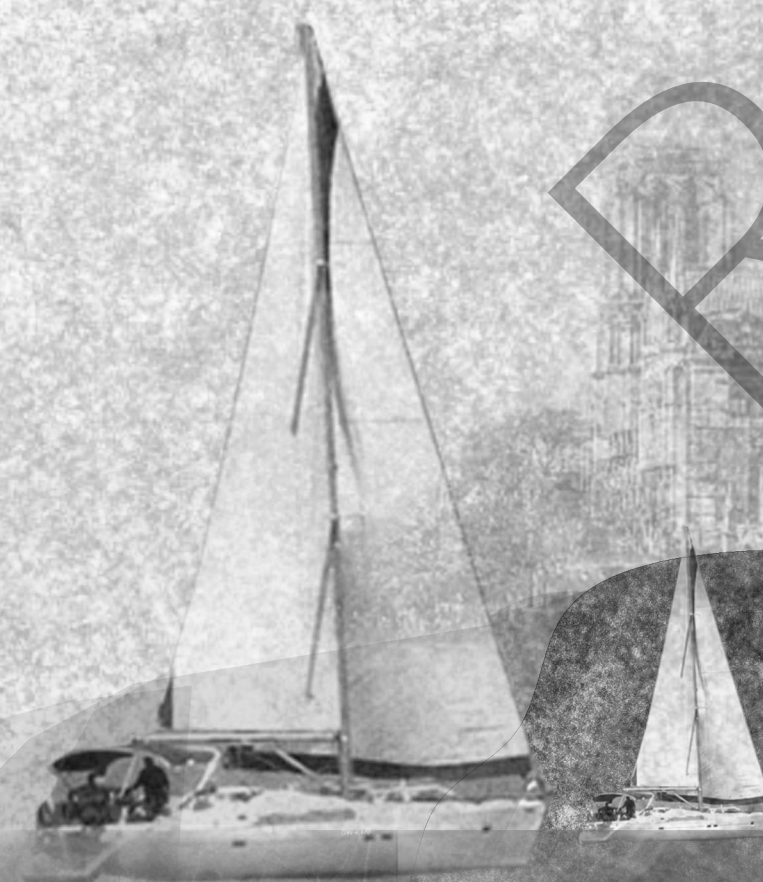
JUST HOME.

At the end of a long journey, here there is Home.

In a society where buildable land seems never enough, waterways become evident as an integral field of new opportunities and interventions within the urban landscape. The vision of this project is to insert a modular system which allows the possibility to grow and extend functions while affording the opportunity to be repeated in similar urban contexts. The bank of the Seine river presents the first step towards a new housing concept guided by spatial efficiency, comfort, natural light and a flexible appearance.

The project is conceived on the water to overcome the largest problem in locating refugee communities within a metropolis. Adequate land is difficult to find within the centre of large cities, and is not usually used for social housing typologies due to its value. Consequently, social housing and refugee communities are usually pushed to the peripheries of a city, where connection to infrastructure and land value is incredibly diminished.

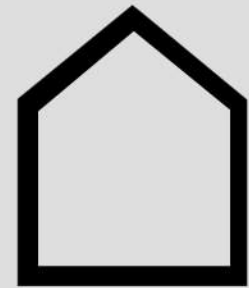
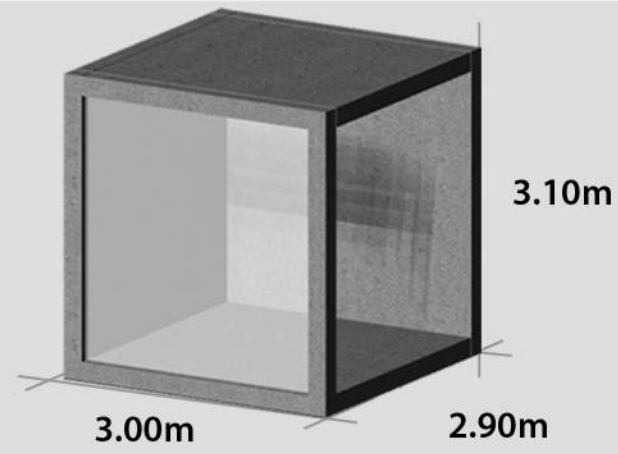
The Seine river in Paris is an example of a European community which traditionally maintained riverside housing which has since been almost completely phased out, until now.





FUNCTION

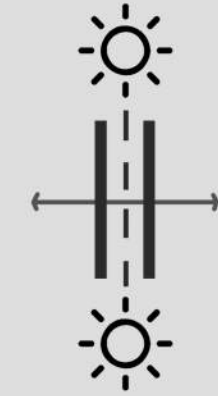
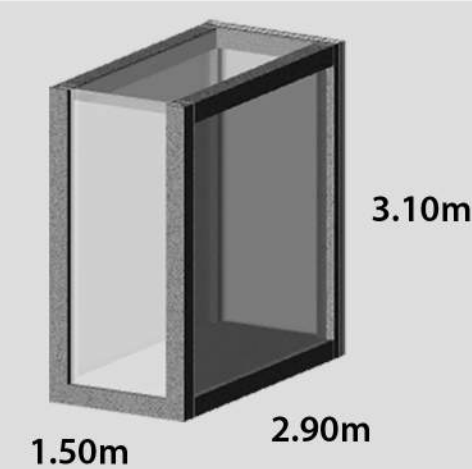
STANDARD MODULE



The standard module 3x2.90x3.10 allows to develop the house as a repetition of boxes. Every box fits a different function maintaining the minimum space requirements.

CONNECTION

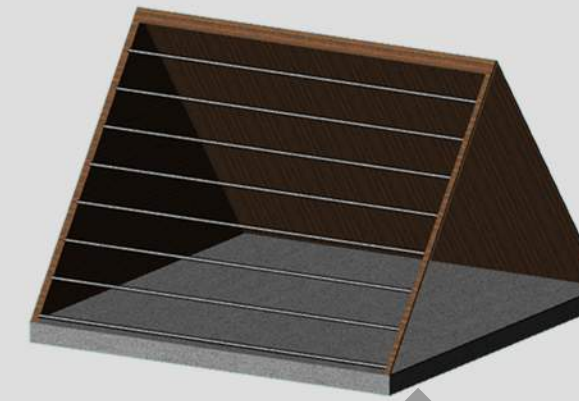
ADDITION MODULE



The glass module is half of the standard module. This element works as additional space for living room and kitchen and acts as the connectivity space with the main entrance and the roof.

ROOF TERRACE

ADDITION MODULE



Each unit has a private open space. For the second floor units the roof becomes an open terrace protected with one gabled roof.

COMMUNITY HALL

ADDITION MODULE



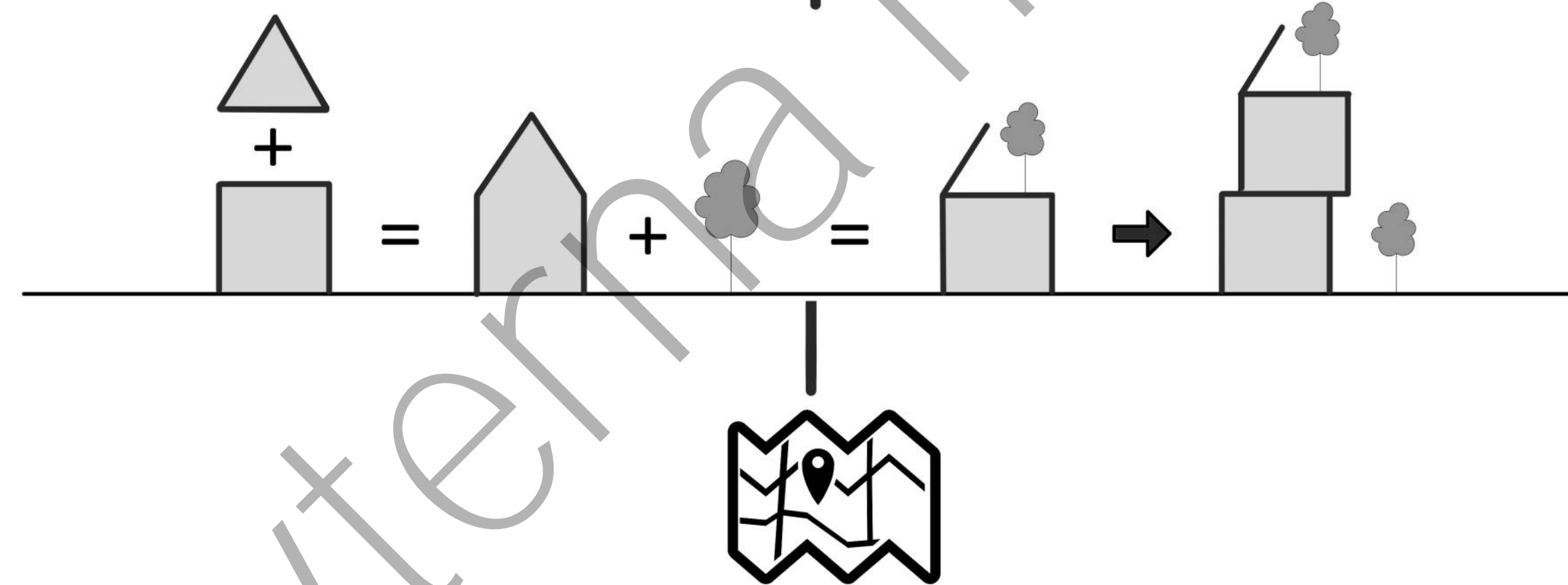
Like every residential center "Just Home" proposes a community public space where people can feel part of the community and of this own project. The building is made of the same structural frame as the housing but the walls lost solidity by becoming glass.

living space

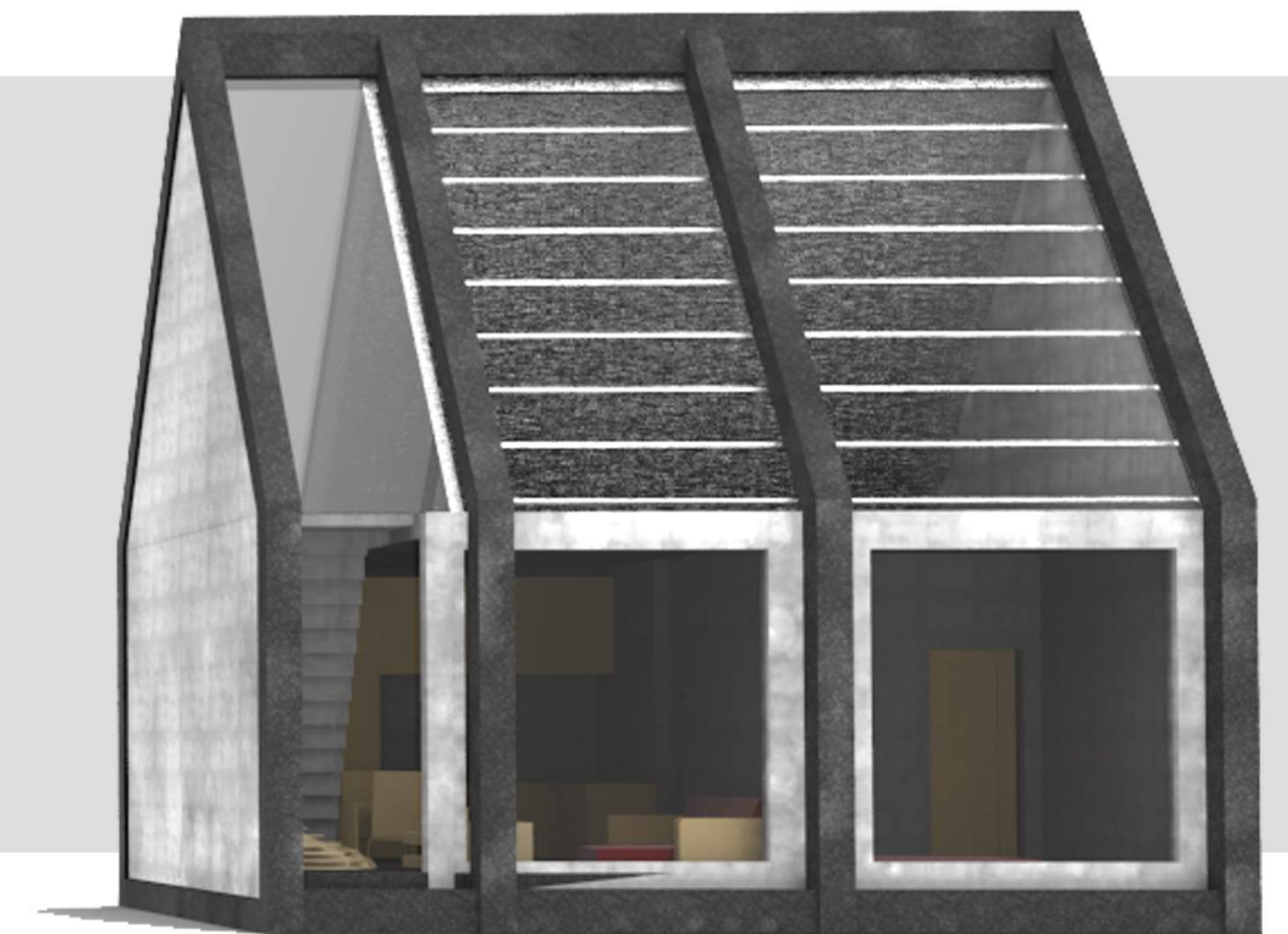
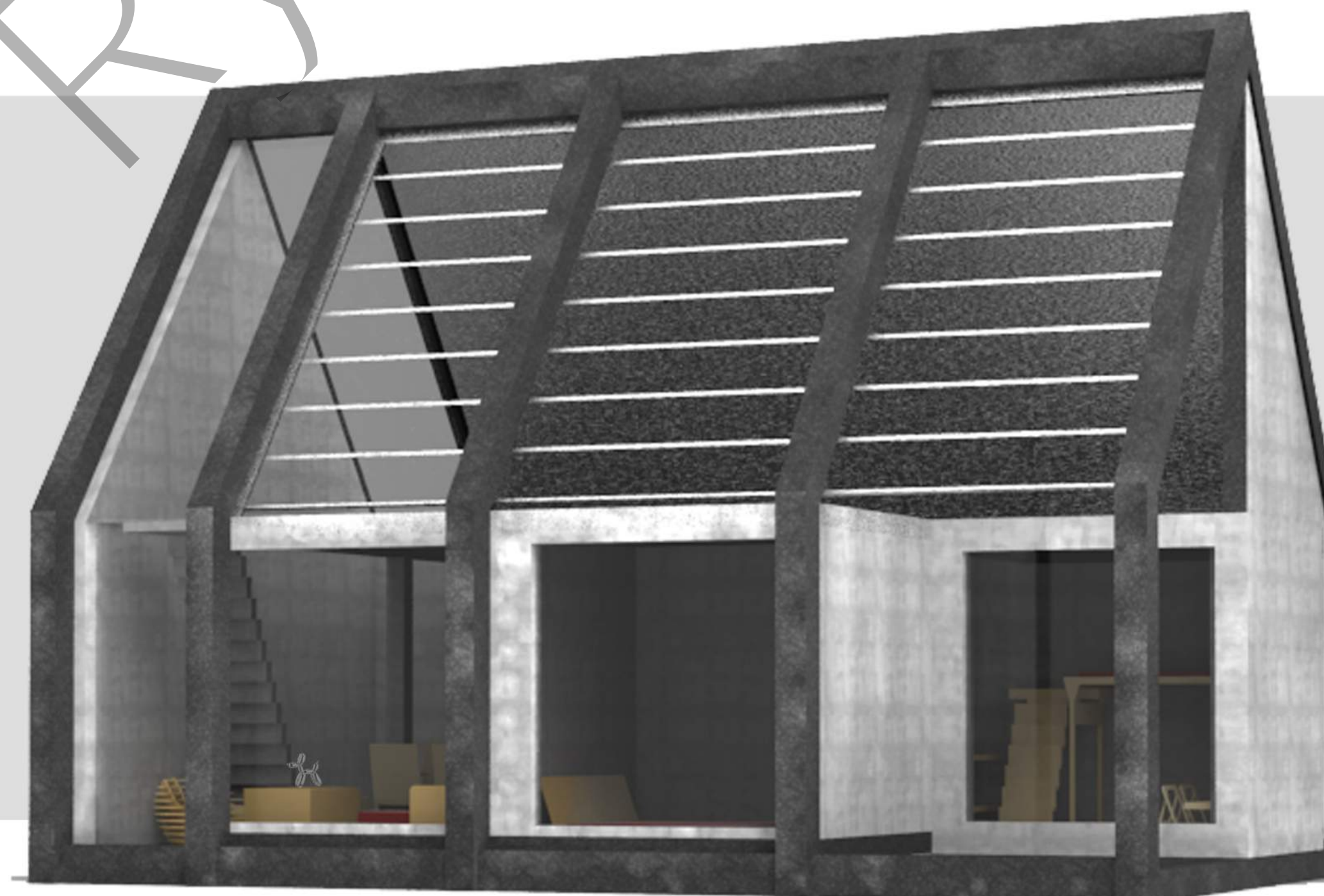
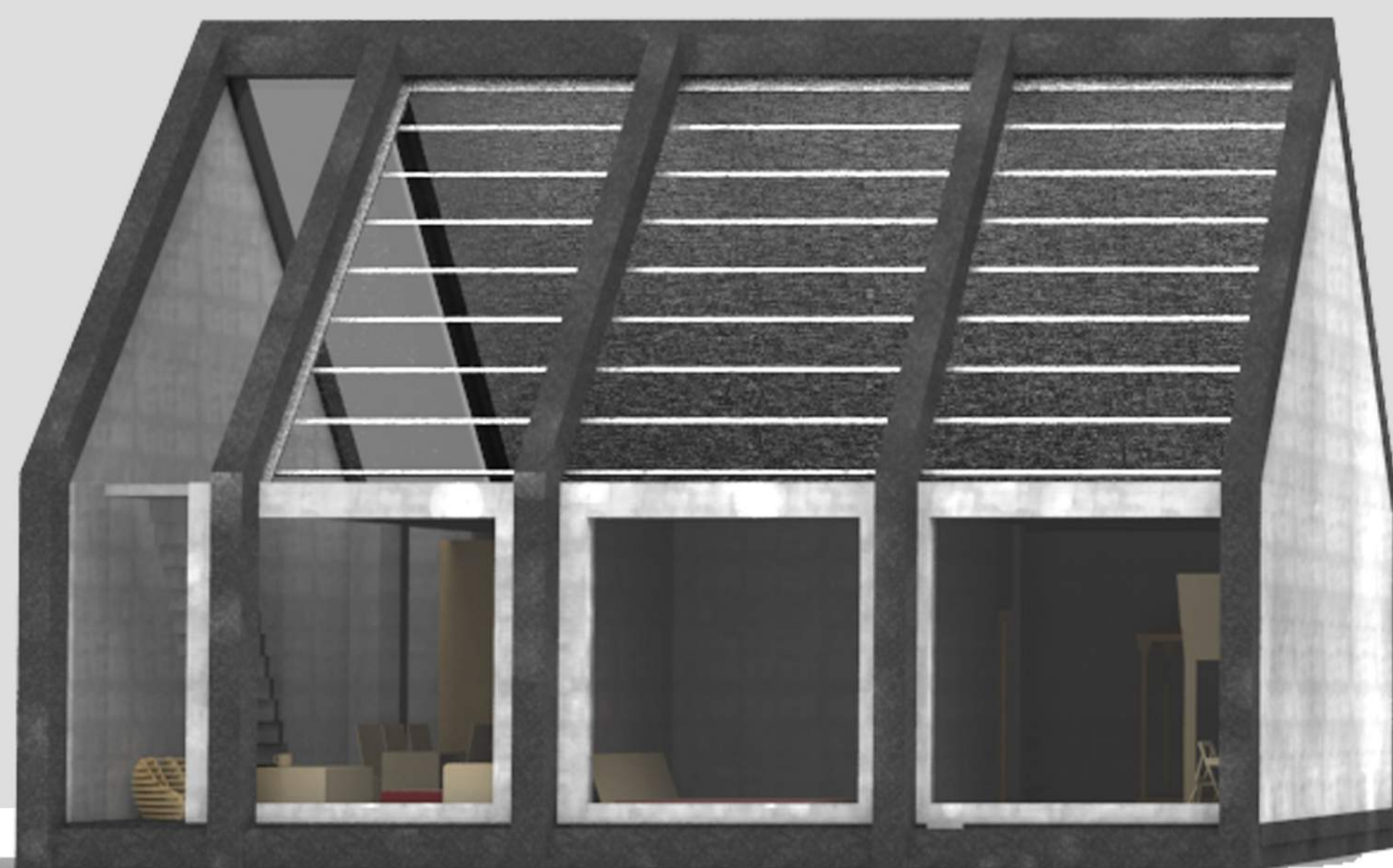
light space

green space

social space



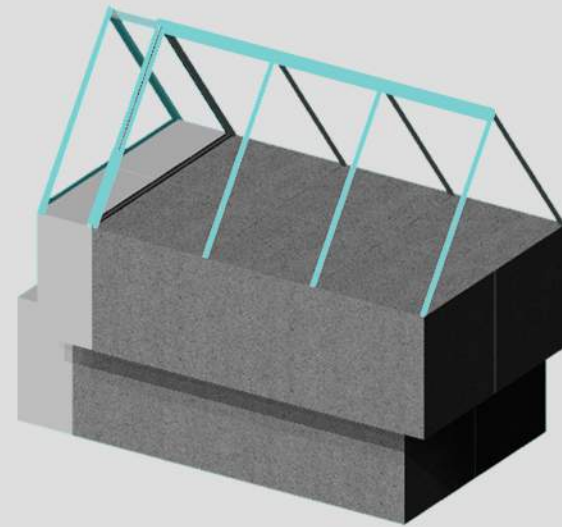
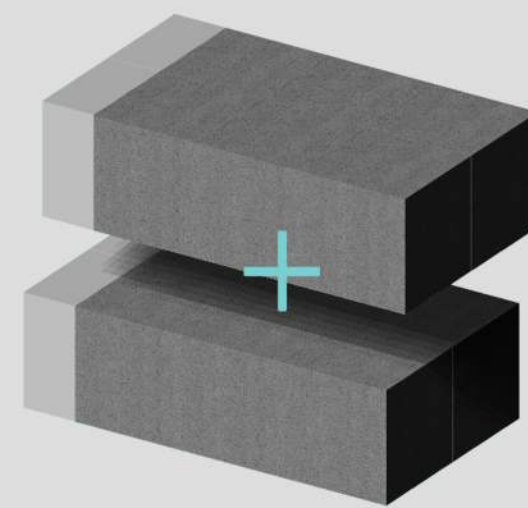
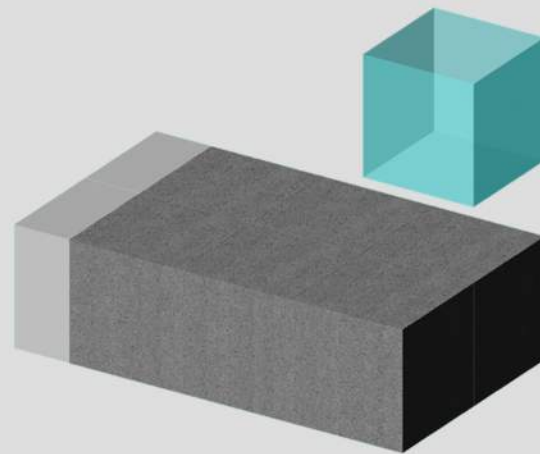
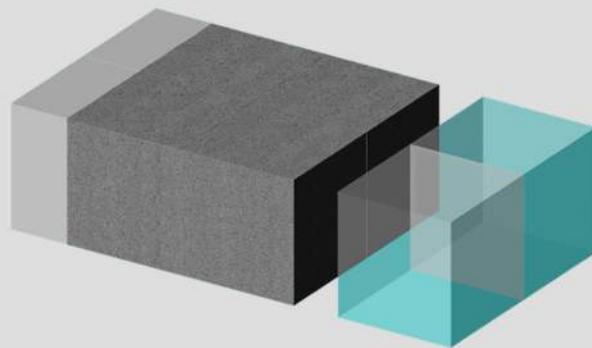
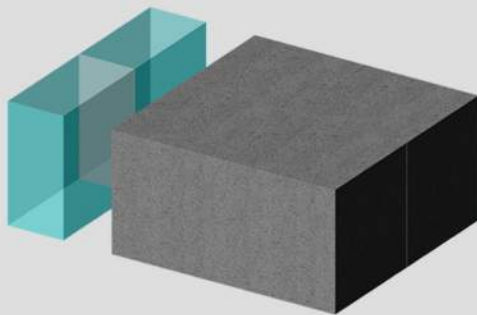
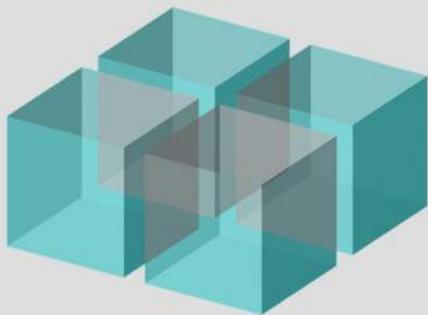
A new landscape ...a symbol of Community in the middle of the city



THE PROCESS

DEVELOPING A UNIT

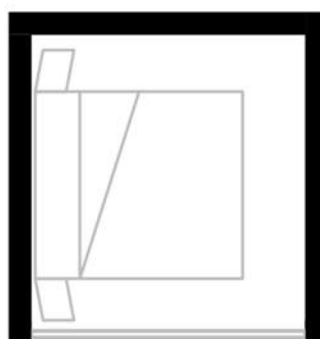
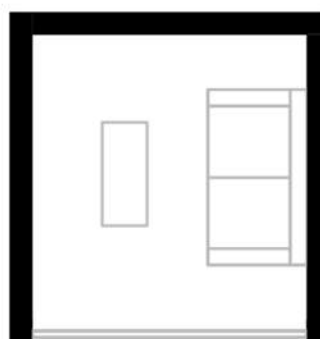
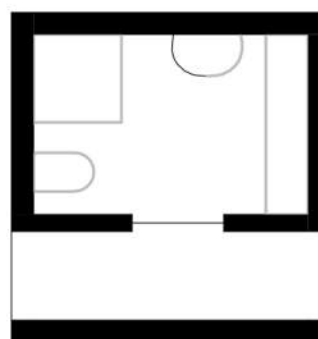
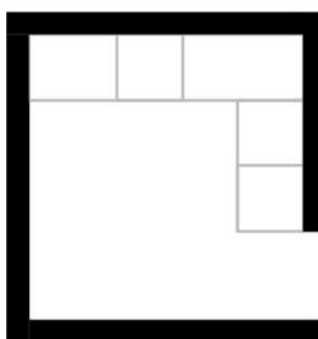
modularity, flexibility, componibility, creativity



MINIMUM FUNCTIONS MODULES

PRIMARY NEEDS

plug in boxes



The standard module 3x2,90x3,10 allows to develop the house as a repeatability of boxes. Every box fits a different function maintaining the minimum space requirements.

Kitchen

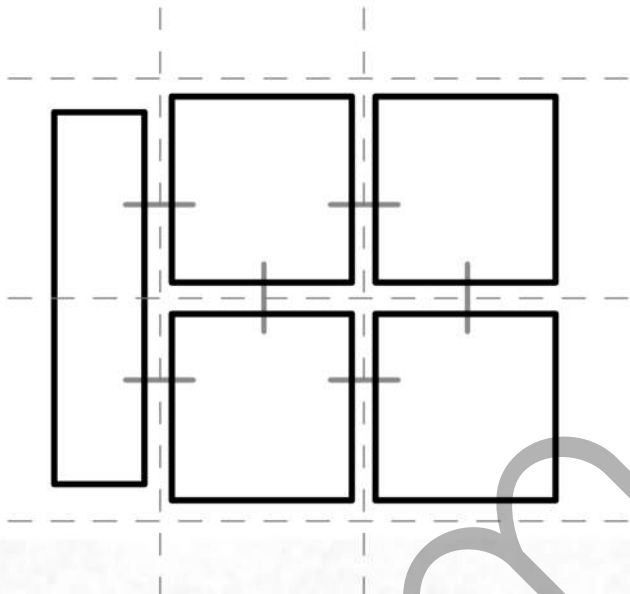
Washroom

Living room

Bedroom

CONNECTION

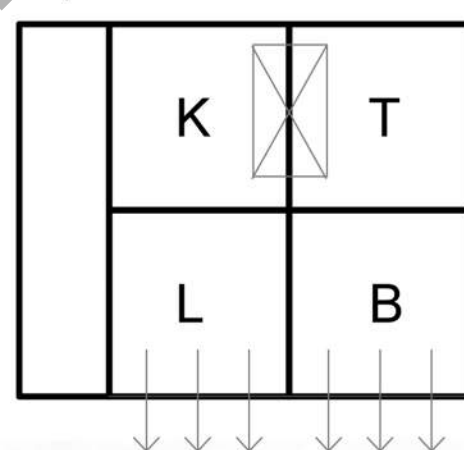
MAIN GRID



Each module is combined with the others through a modular grid. This allows for the continuous flexibility of the unit, which can grow or reduce following the needs of the residents.

MINIMUM MODULE

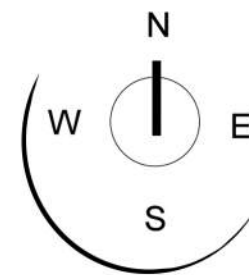
MAIN DISTRIBUTION



The minimum standard module has been composed in the most functional solution. The entrance is located on the glass module, that allows to create an entrance space. The kitchen and washroom are always combined together to have a unique block of service and water system. The big windows are all located on one side, according with the sun position.

ORENTATION

MAIN EXPOSITION



The main facade of each unit is oriented West-East to provide a better efficiency all year. During the summer the big windows allow a steady ventilation. During the winter the position will naturally warm the unit.



INTENTION

STRATEGY

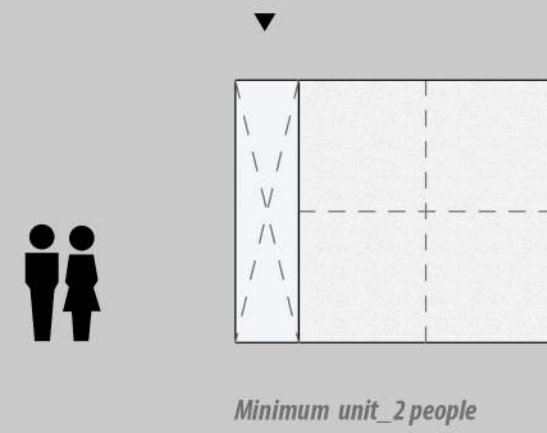
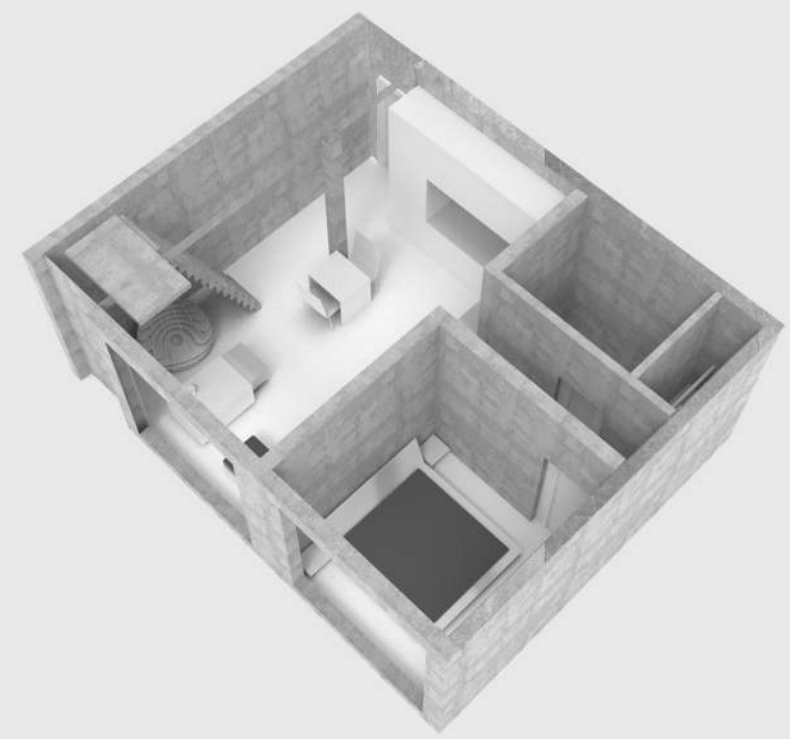
Each module consists of a 3m by 3m box that holds a certain function of the home: sleeping, eating, dining, living, washing, etc., with each component designed to link to any other for a truly customizable experience.

These functions are anchored by a glass module which acts as the house's main entrance. The home's communal spaces are seen as the most important, and are consequently always linked to the glass module which allows for the space to expand while also functioning as a light box to bring filtered light into the living spaces which need it the most.

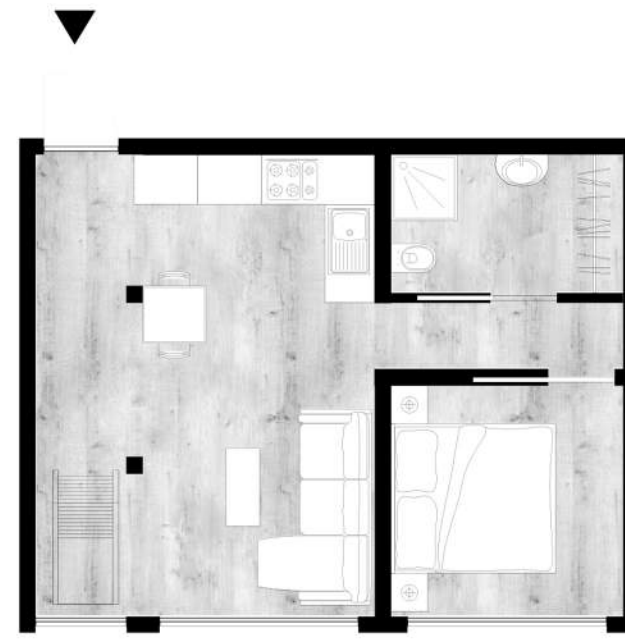
Finally, the rooftop module completes the look of the home, while also affording the family a private outdoor space to grow food, relax, and enjoy the heart of the city. Additionally, the rooftop module allows the family an opportunity to expand their home as they wish.

The homes are situated such that they can provide panoramic views of the riverside while maintaining privacy against the busy city. The south-facing glazing also mediates the solar heat gain in winter and summer time to make the homes more energy efficient, providing a comfortable atmosphere year-round. Sliding doors on the south provide access to a riverside terrace for the residents.

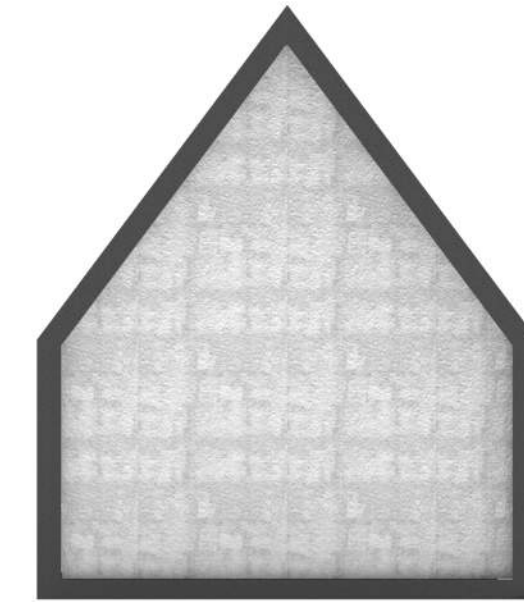




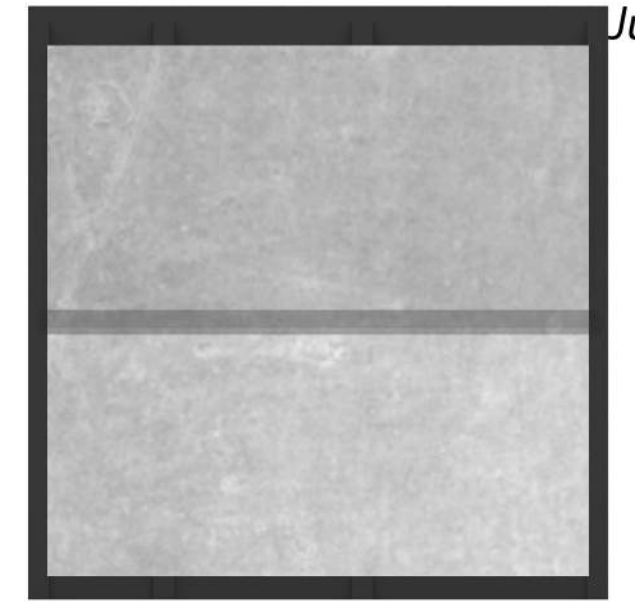
Minimum unit_2 people



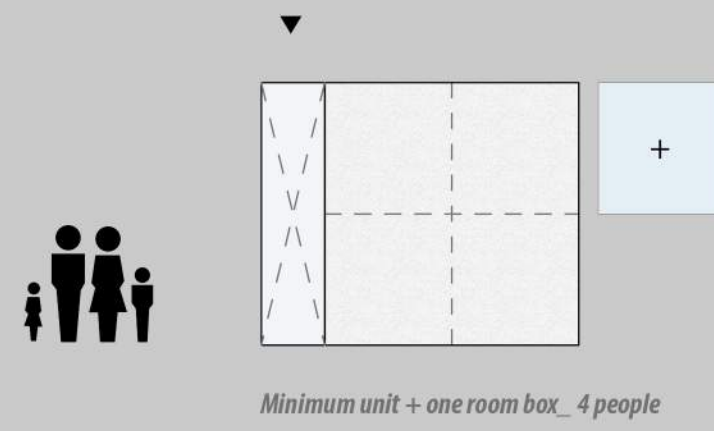
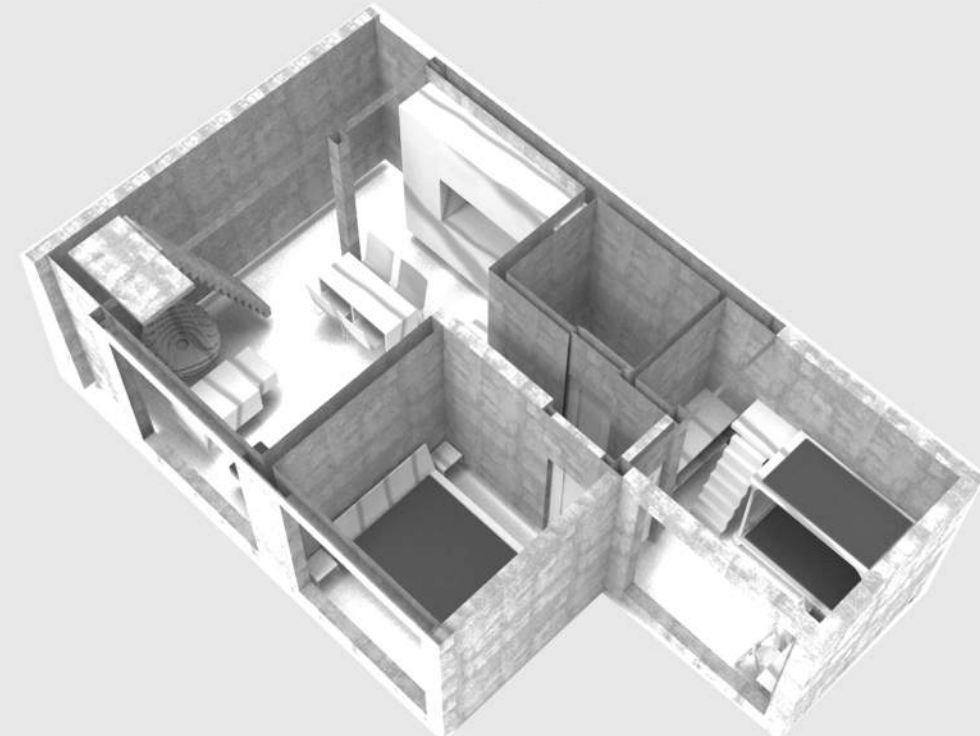
Front facade_A



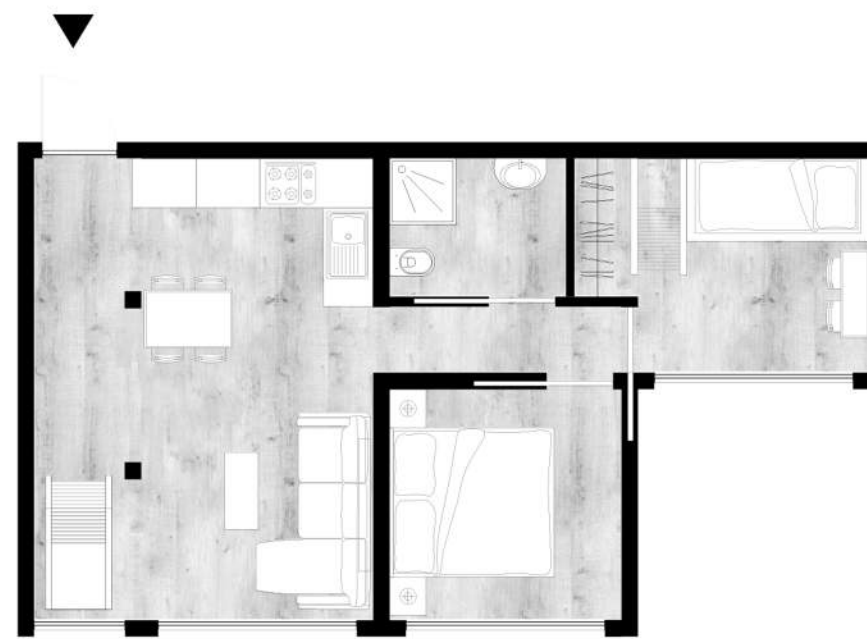
Facade solution n.1_Precast concrete panels



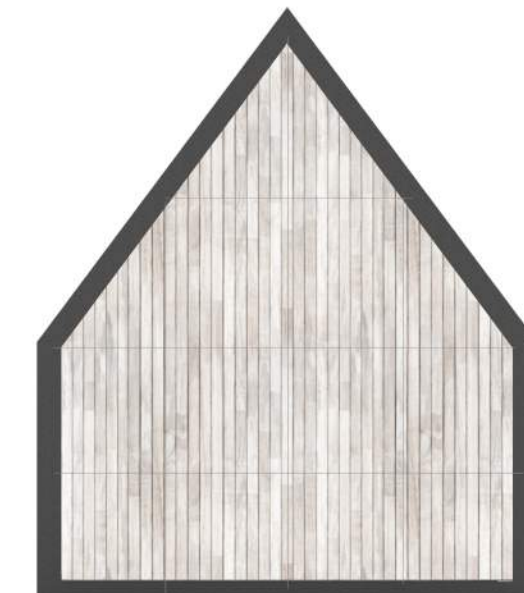
Back facade_A



Minimum unit + one room box_4 people



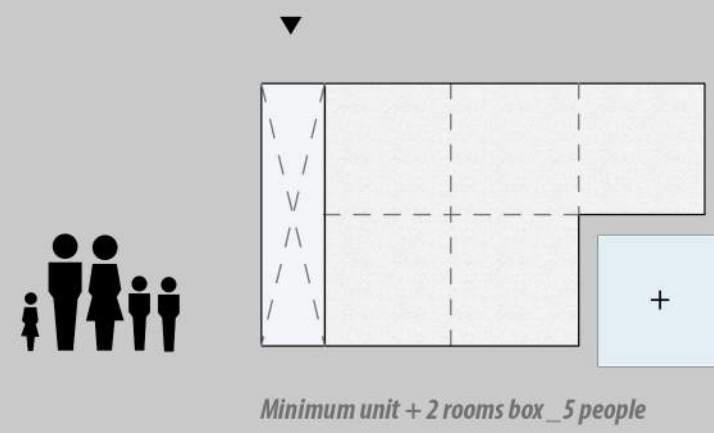
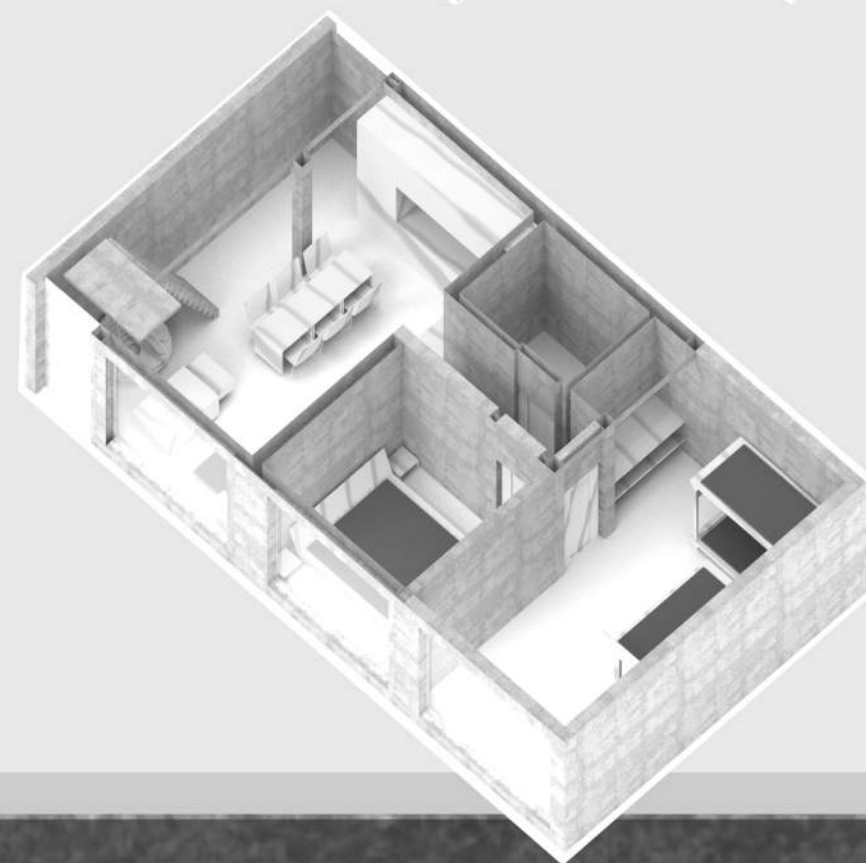
Front facade_B



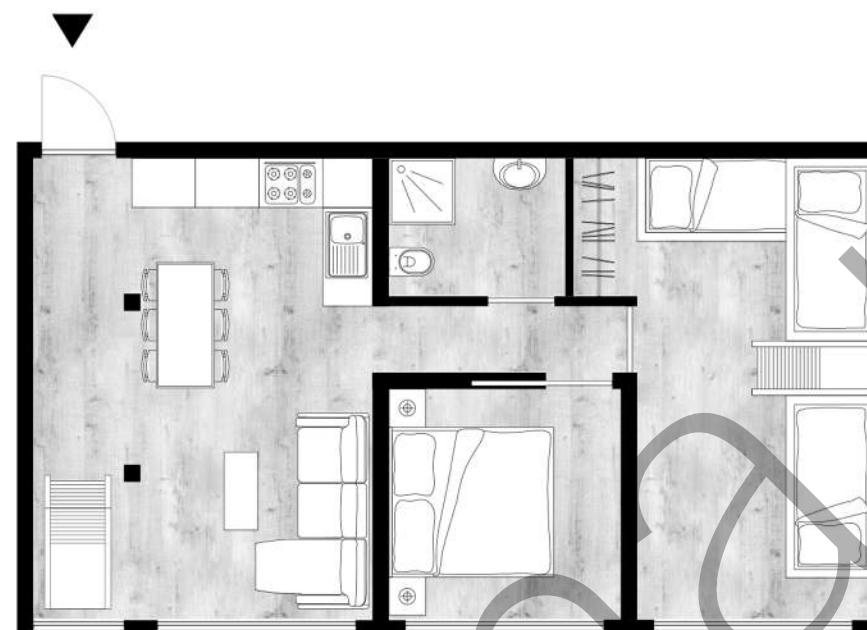
Facade solution n.2_Wood cladding



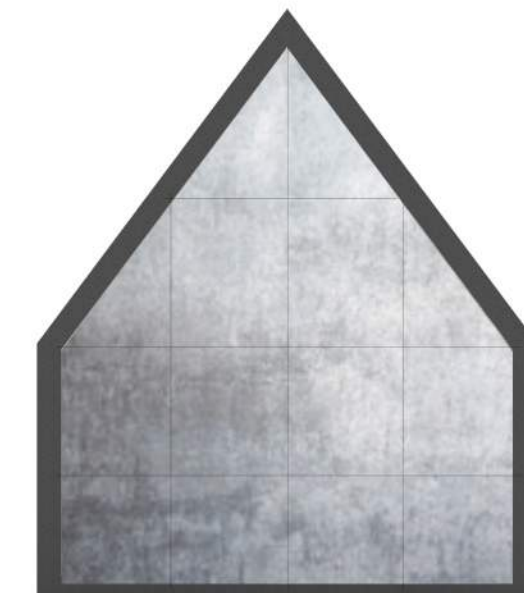
Back facade_B



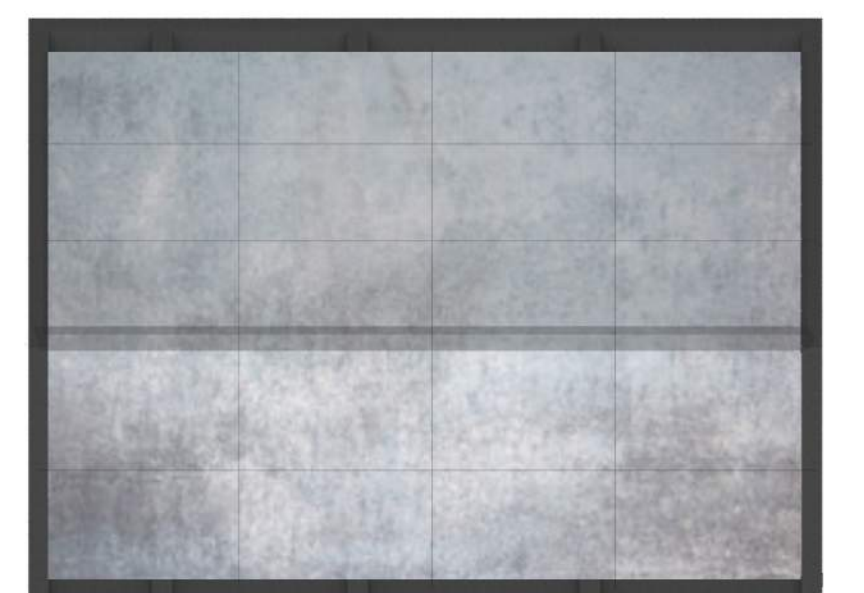
Minimum unit + 2 rooms box_5 people



Front facade_C



Facade solution n.3_Metal panels



Back facade_C

THE UNITS

SPACES , PLANTS AND FACADES



This concept is born primarily out of the desire to implement a plan which could succeed in instilling the true feeling of home that a refugee is seeking. It is for this reason that the modular building components come together to form a clean, iconic landscape of homes, easily recognizable as a community in the heart of the city.

The simplicity of the modules unifies the community as a string of pitched-roof homes, while facilitating the need for expansion and customization.

The placement of these modules along an urban river therefore presents an opportunity to revisit traditional housing typologies, maximize the effectiveness of our cities, and properly incorporate these marginal communities into the heart of the city. Unlike land, water cannot be owned and remains free. Communities built on the river further benefit from the implied freedom of water.

