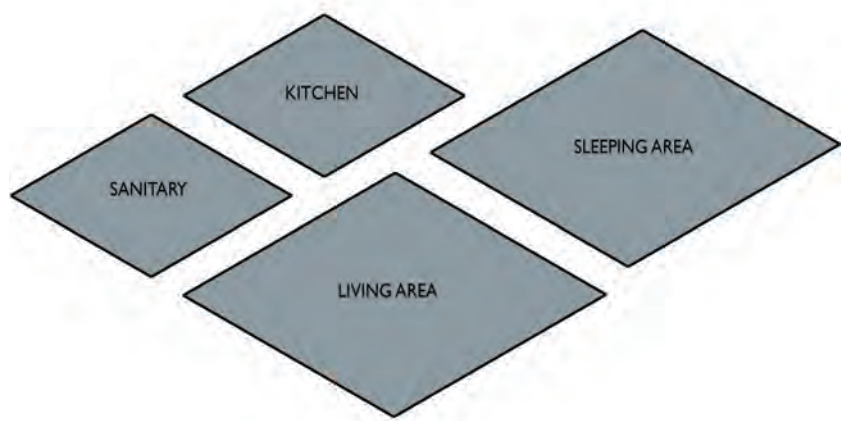


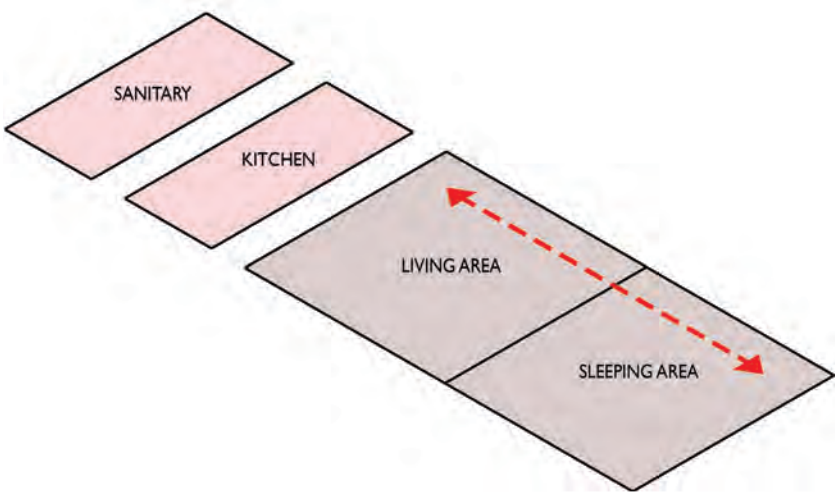
## TRAPEZOIDAL MOD





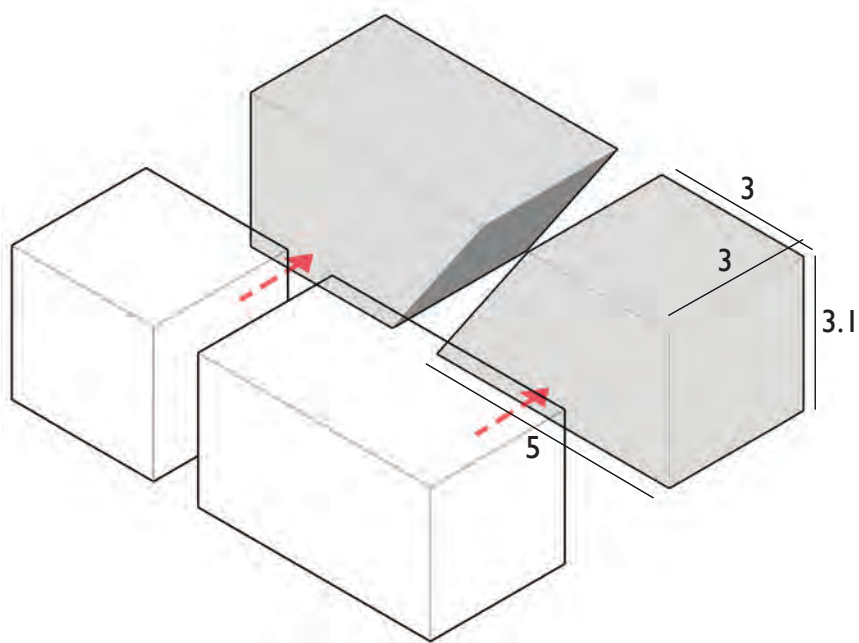


**THE PROGRAM**



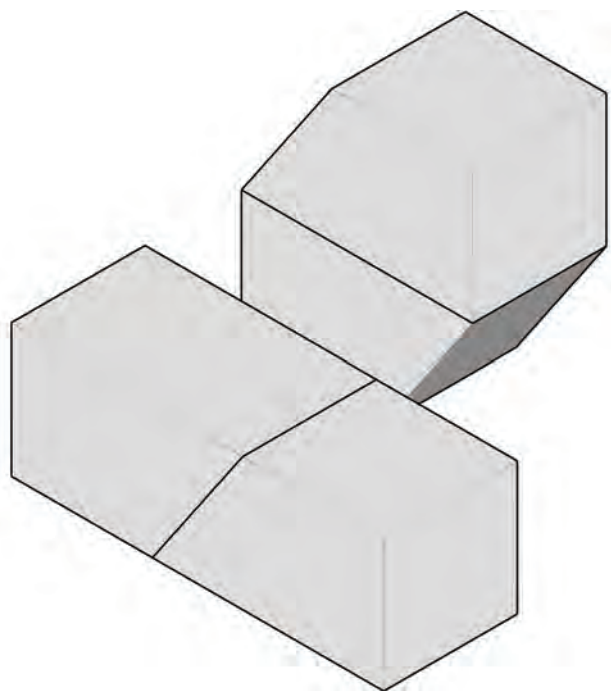
**ZONING**

programs are arranged in accordance with functional relations and organized according to wet and dry functions



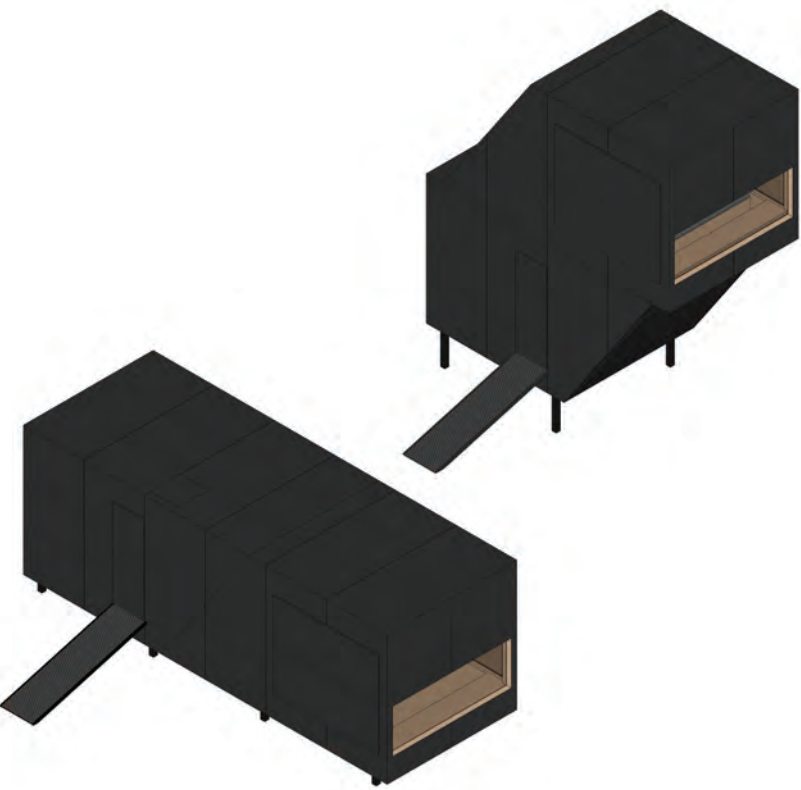
**UNIFORM MODULES**

separation of wet and dry function zone into 2 typical modules



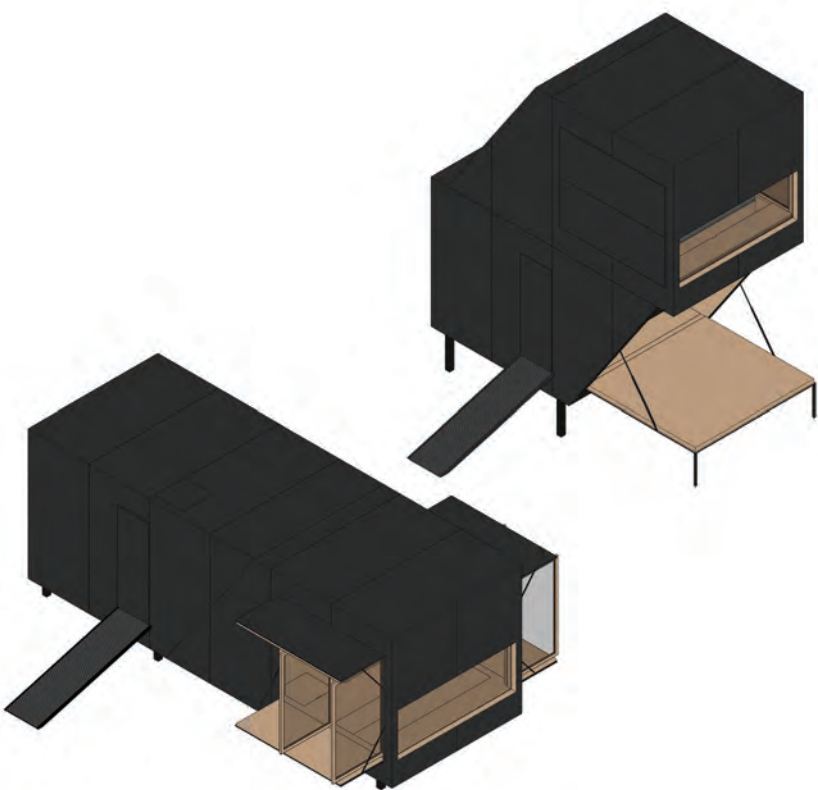
**CONFIGURATION**

modules can be mounted horizontally or stacked vertically



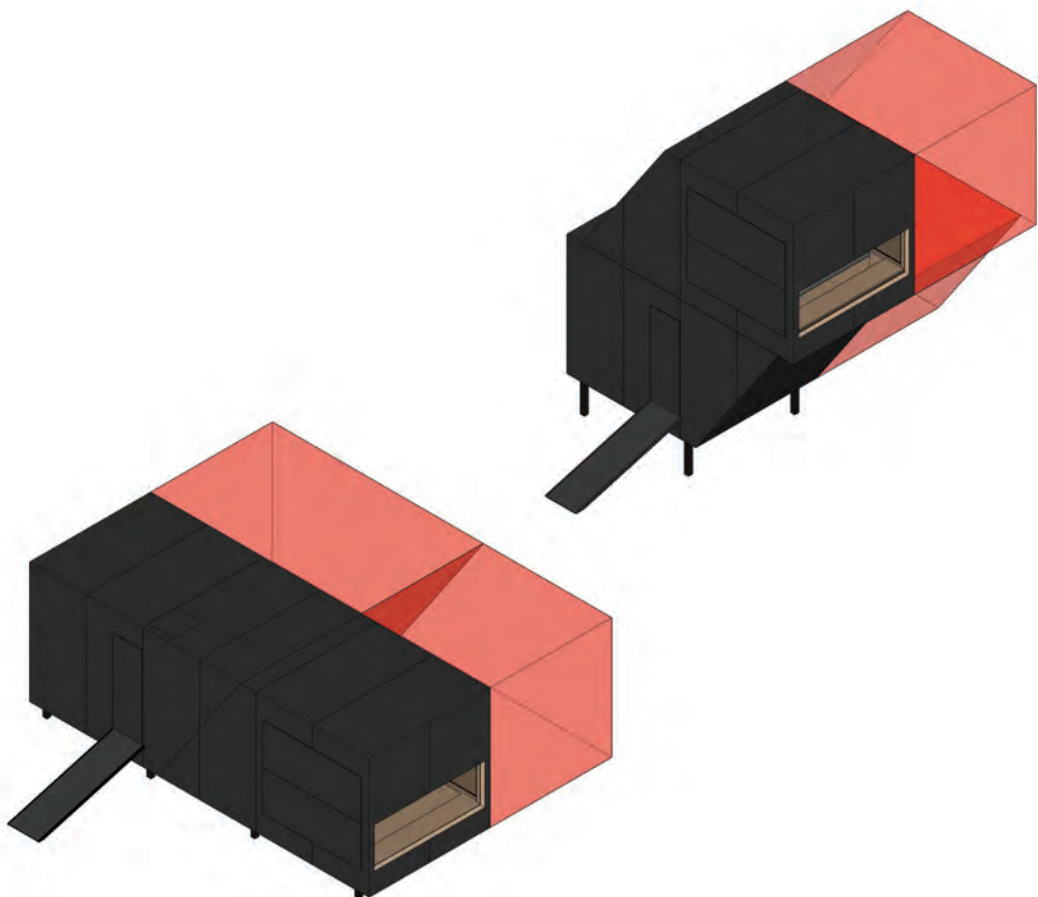
**TERRAIN ADAPTABILITY**

possibility to adapt to various terrain and location. the vertical configuration and the on-stilt design makes the house can be placed in a crowded location with minimum footprints



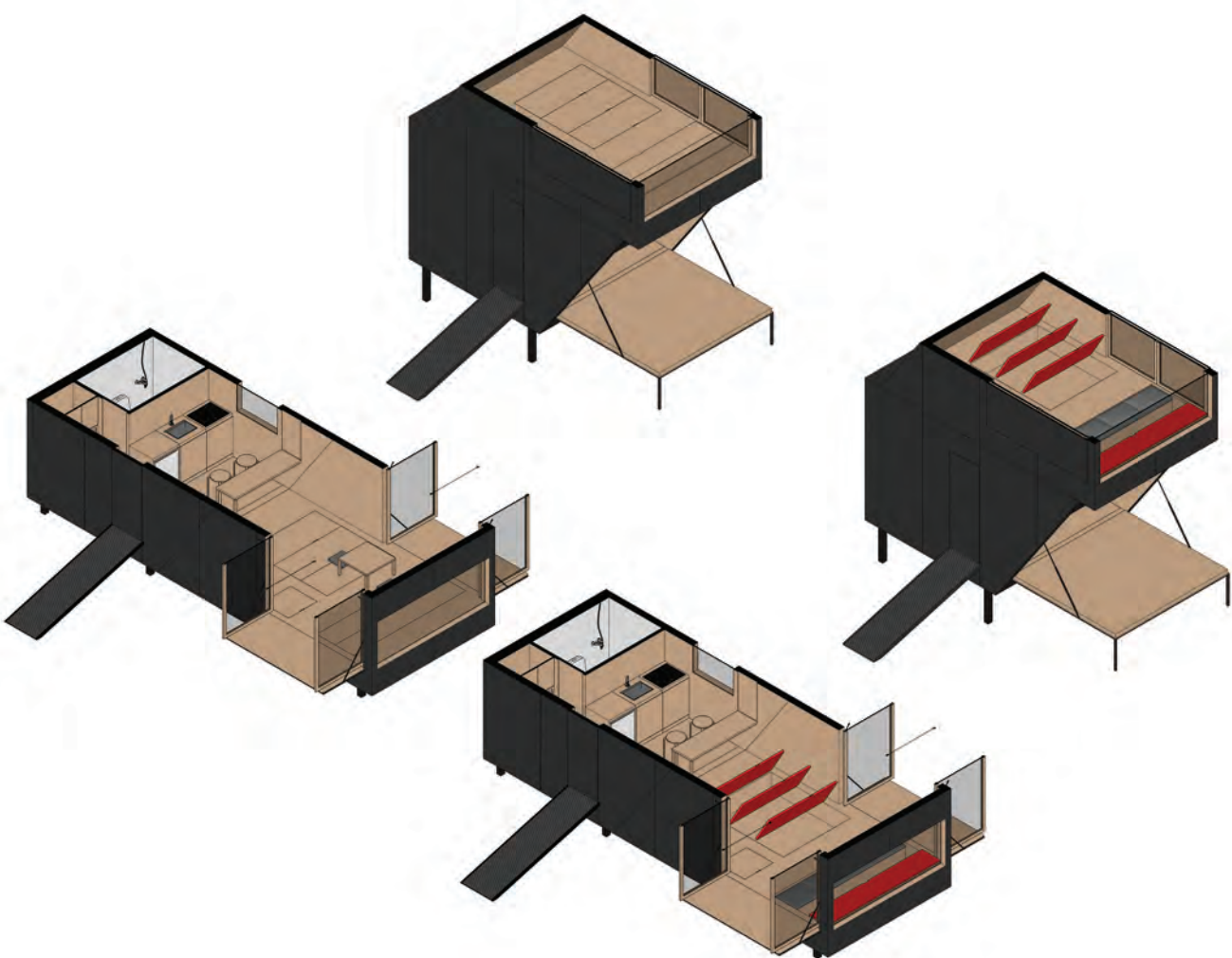
**OPEN / ENCLOSE**

pivot walls and glazing doors can be opened so that air can be freely flowing or closed as protection from bad weather as well as privacy needs



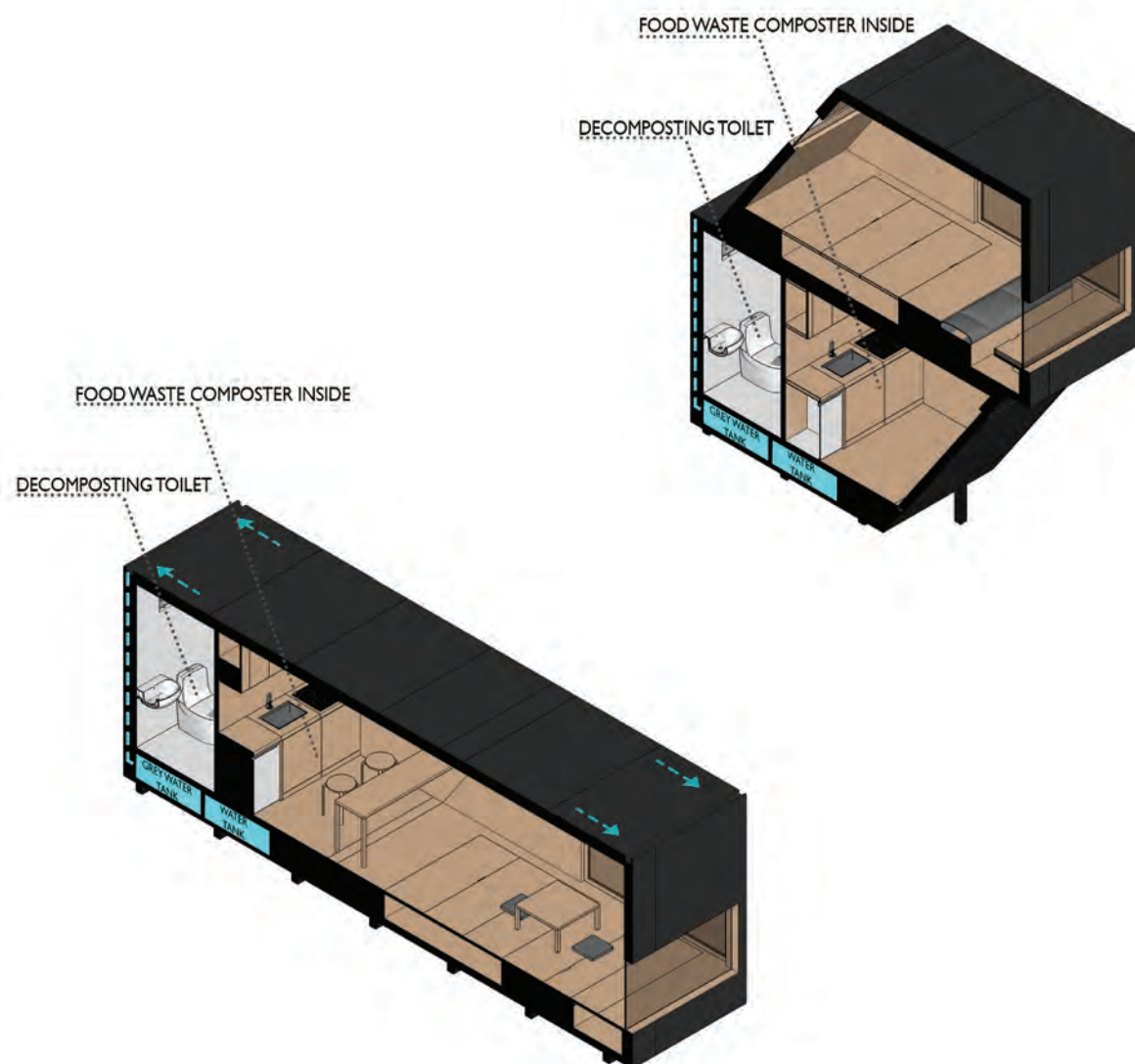
**FUTURE EXPANSION**

typical modules facilitate possible future expansion



**MULTIPURPOSE AREA**

the integration of sleeping and living area into a flexible space. While there are floor level storages to store rollable sleeping mattress, folded furniture , seating cushion and other equipments



**POSSIBILITY TO SELF-CONTAINED & OFF-GRID**

applying rain water collection system, LED lighting, energy saving appliance, and roof conditions that allow for the application of solar panels



MEADOW LOCATION



WOODS LOCATION





HORIZONTAL CONFIGURATION INTERIOR VIEW



Extensive view to the vast landscape from the living area



Flexible area to accomodate vary range of indoor activity



## VERTICAL CONFIGURATION INTERIOR VIEW

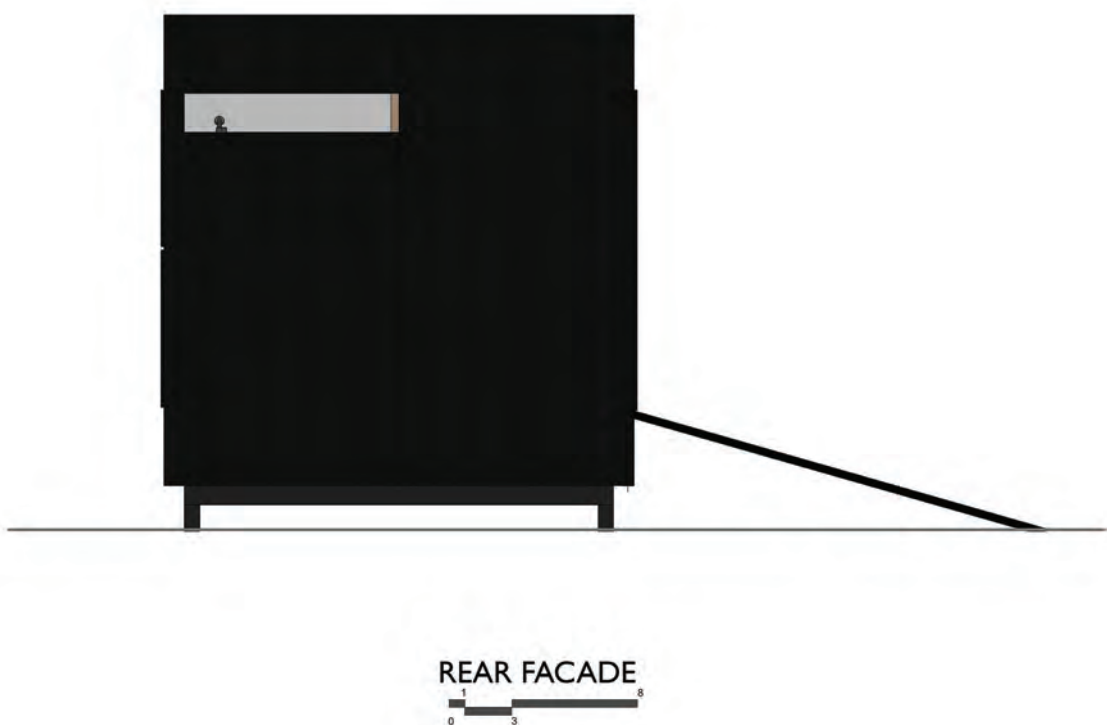
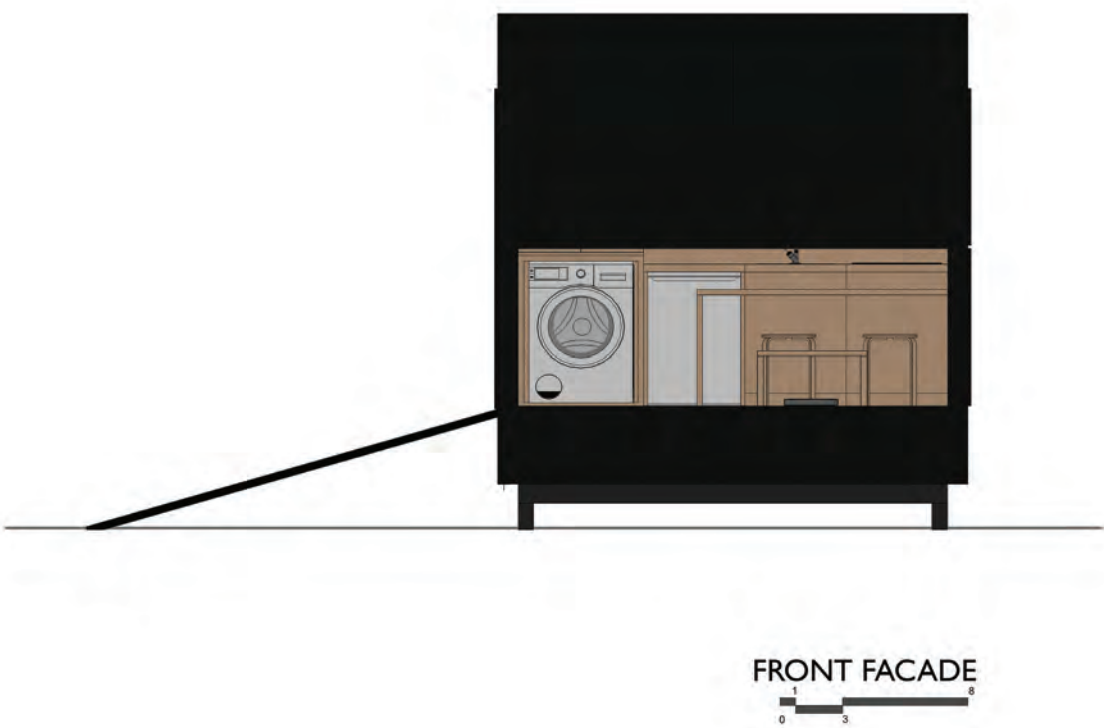
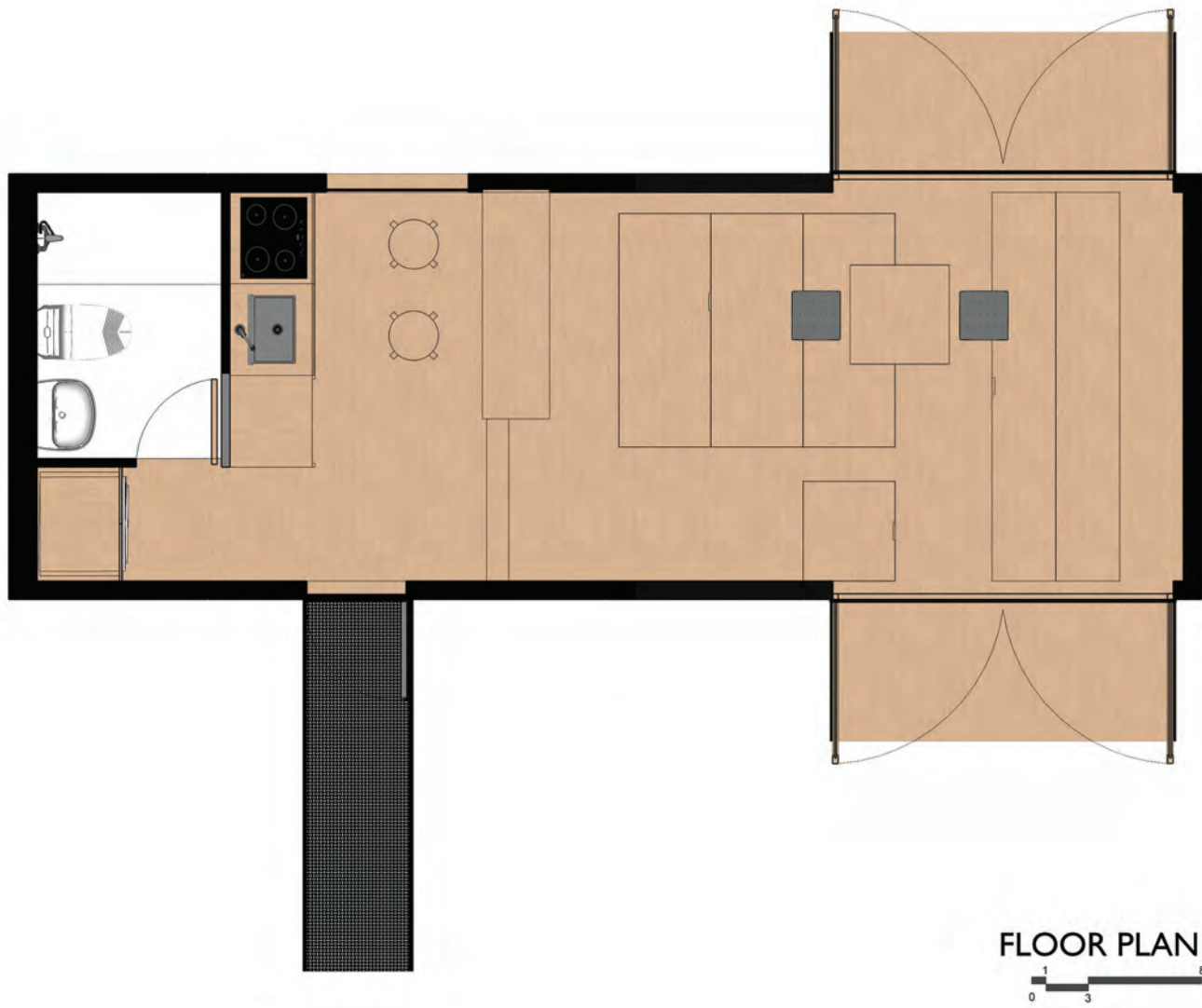


Couch seating is concealed beneath the floor



Hide-out scale sleep area





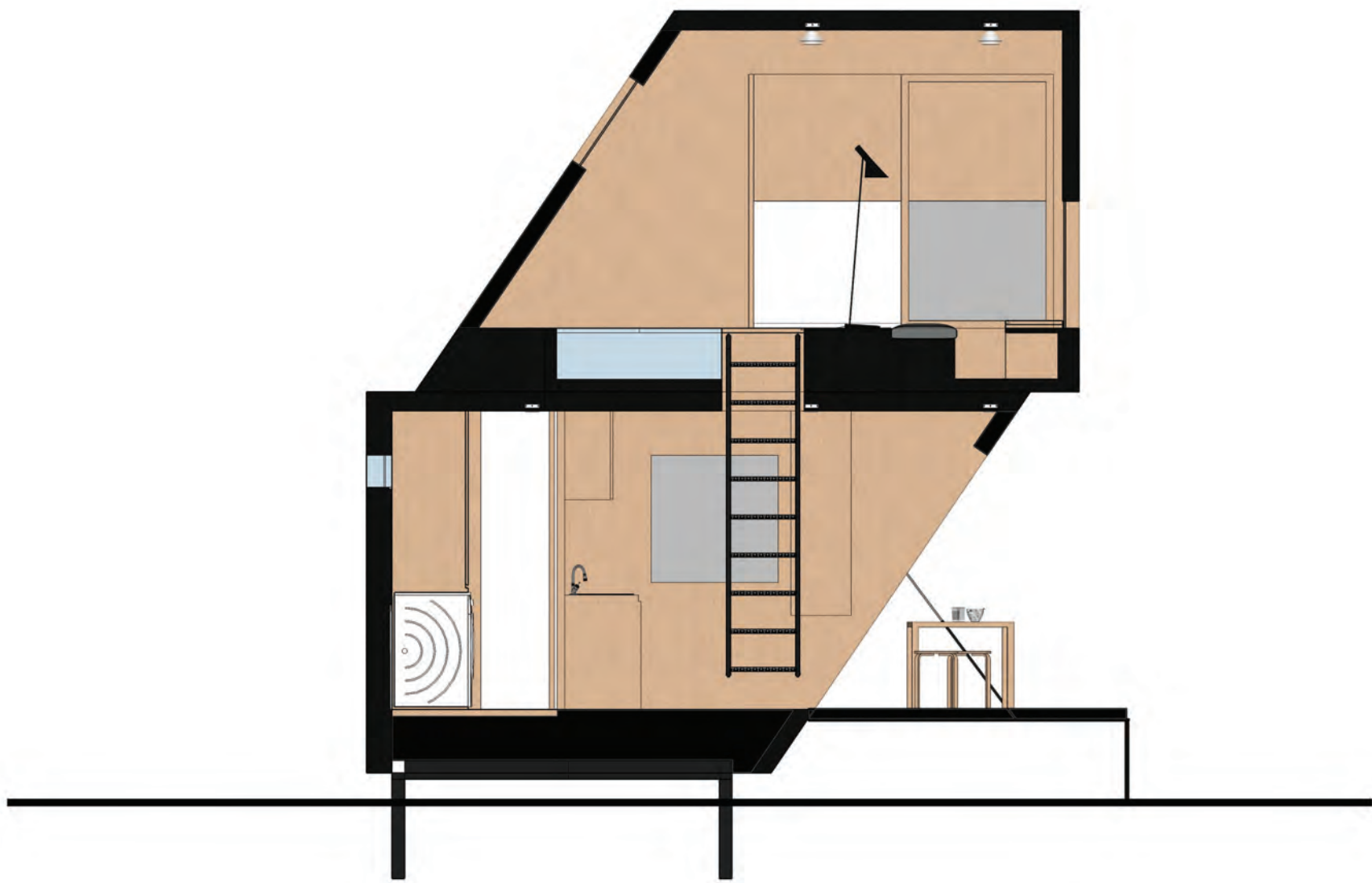




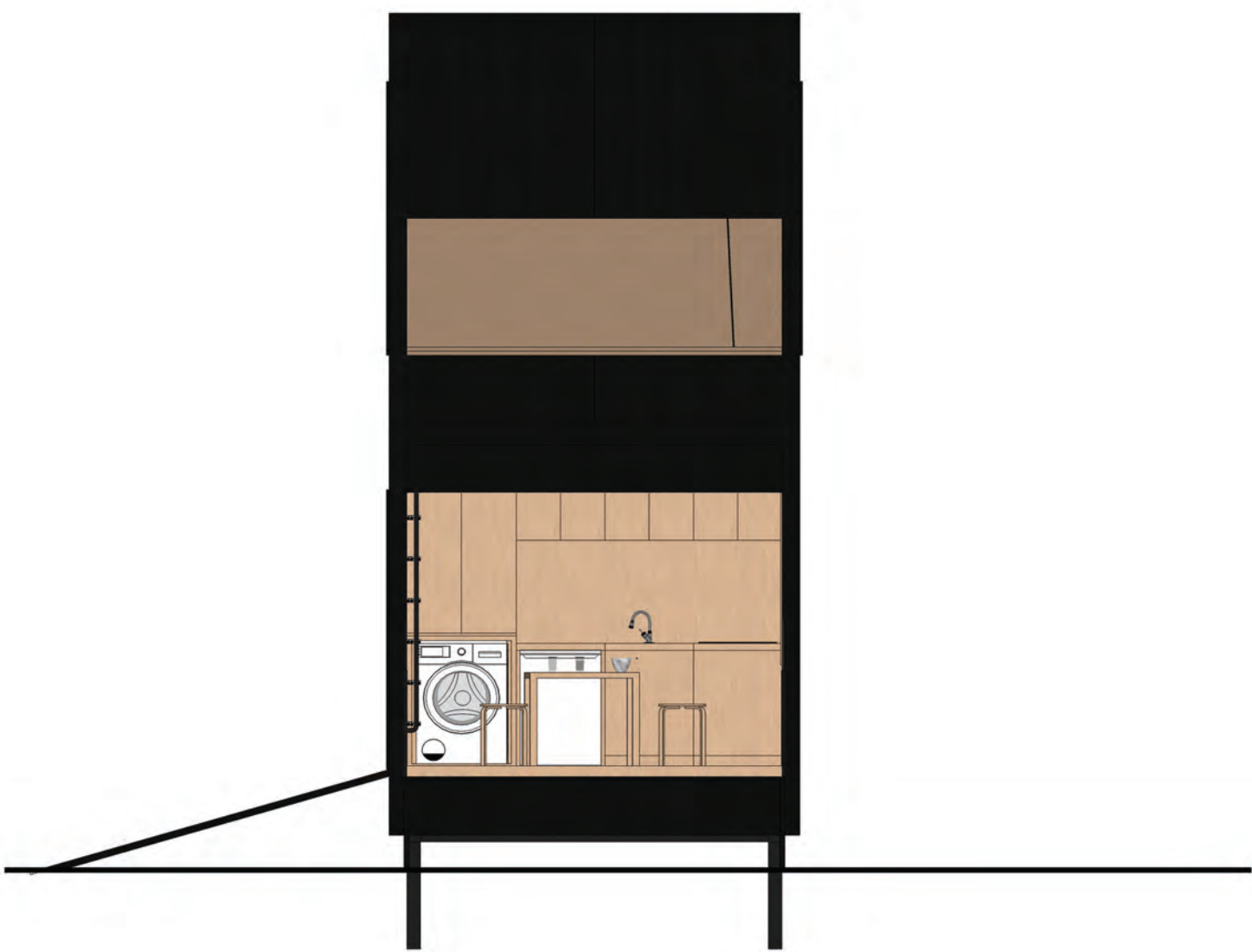
FIRST FLOOR PLAN



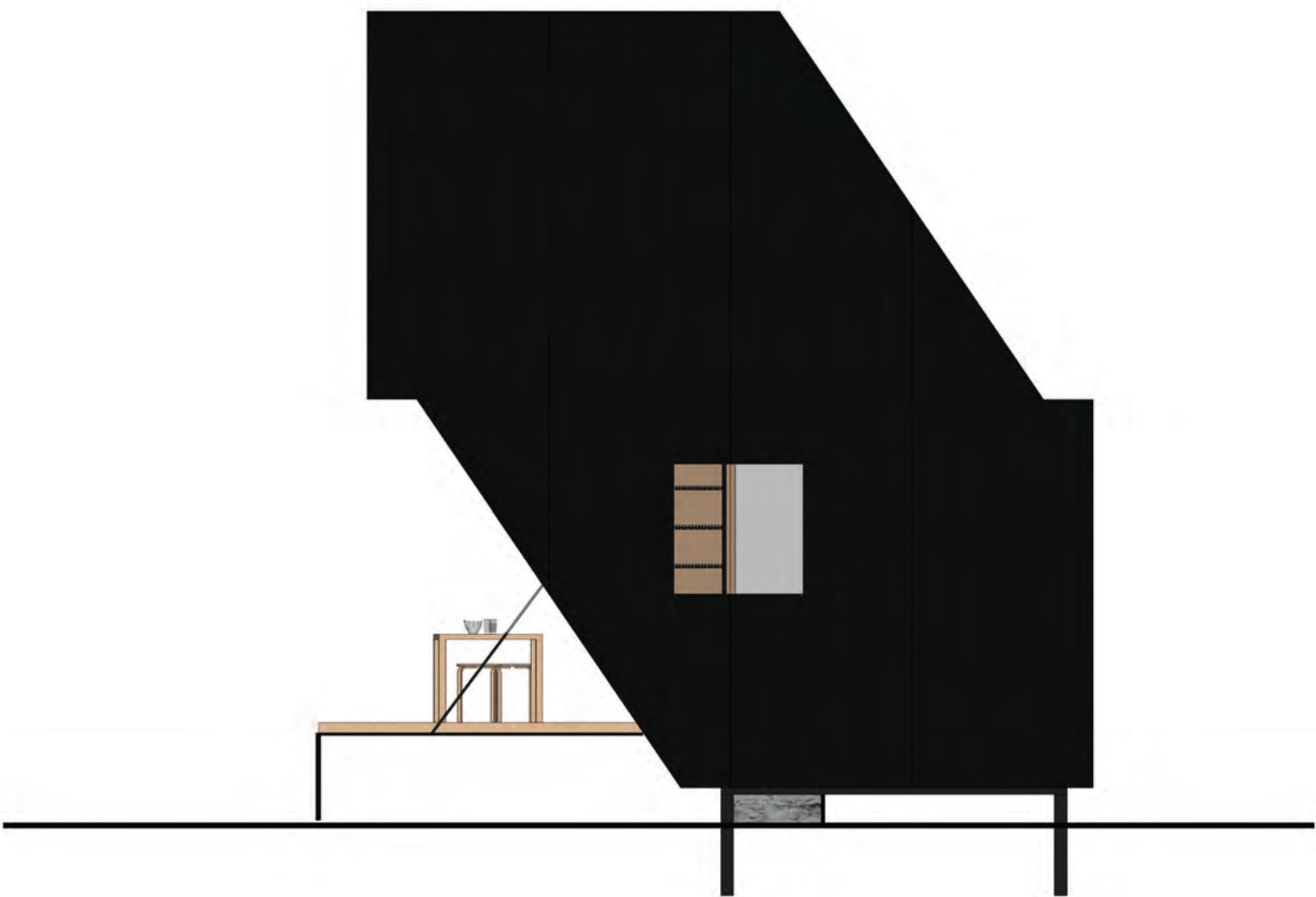
SECOND FLOOR PLAN



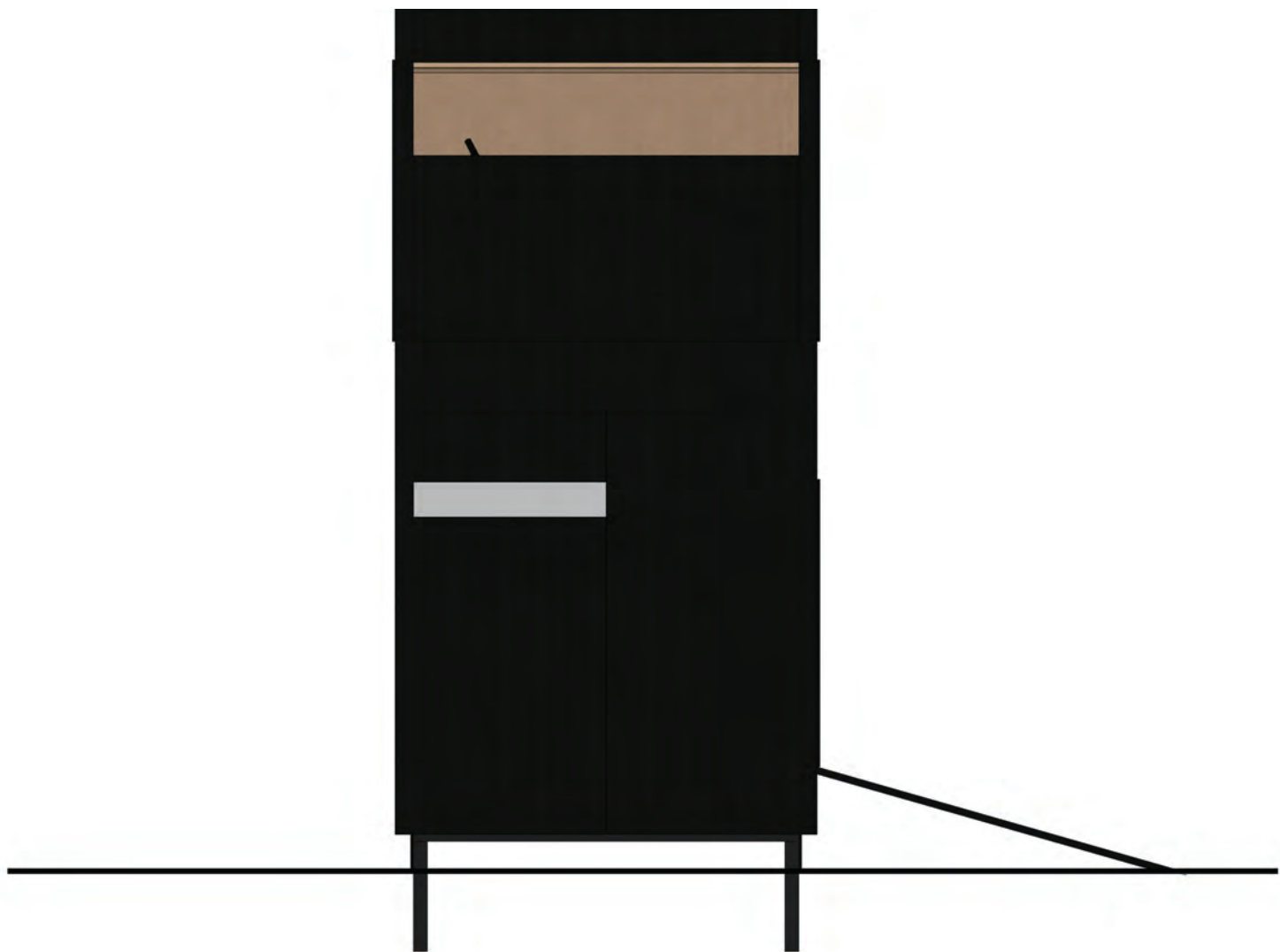
SECTION



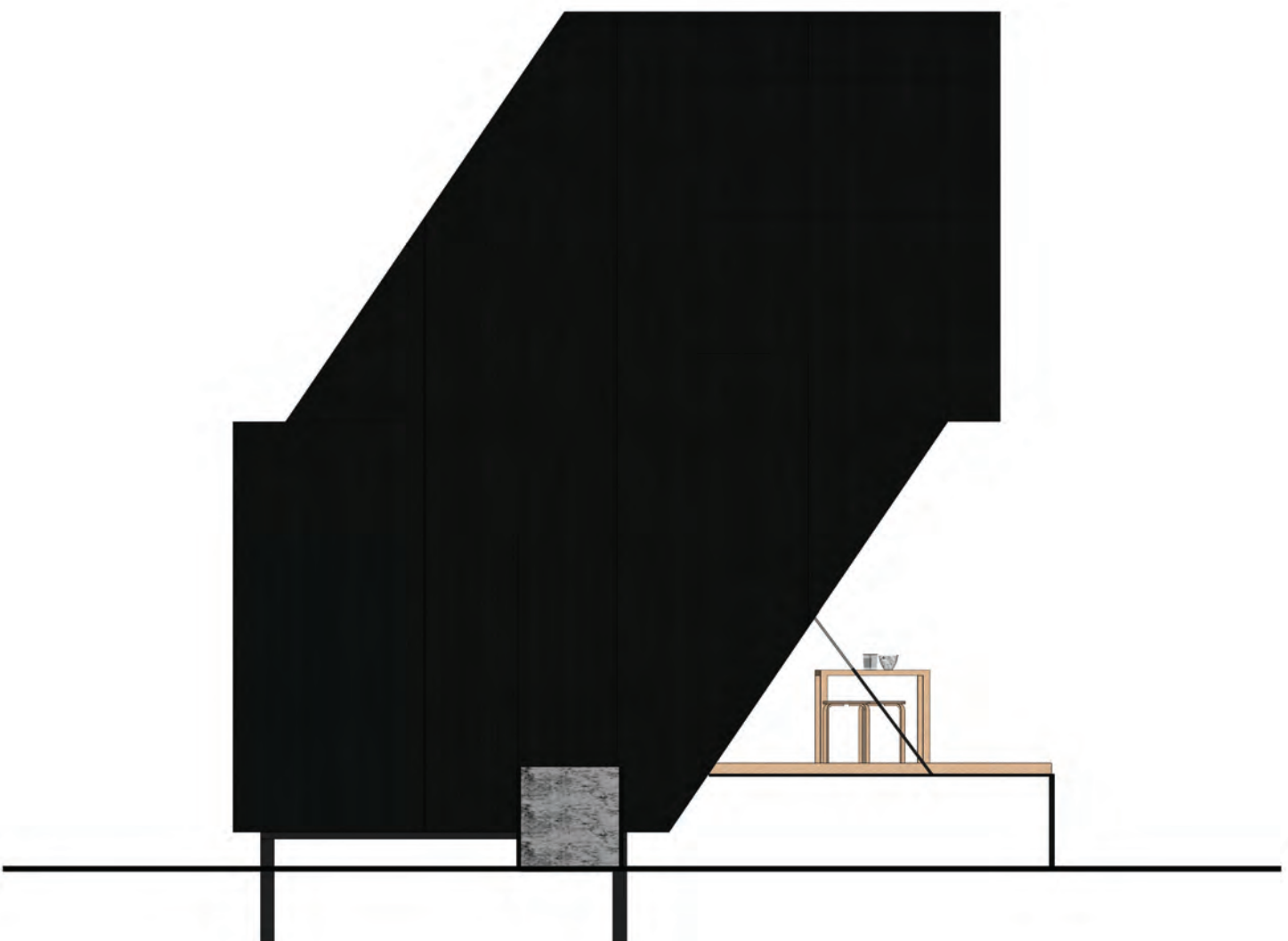
FRONT FACADE



RIGHT FACADE



REAR FACADE



LEFT FACADE